



**PARKWAY**SCHOOLS

HIGHER EXPECTATIONS. BRIGHTER FUTURES.

# Financial Statements

*Date: May 2019*

PARKWAY SCHOOL DISTRICT  
MONTHLY FINANCIAL REPORT  
TABLE OF CONTENT

<u>DOCUMENT</u>	<u>PAGE</u>
EXECUTIVE SUMMARY. . . . .	1 - 2
GRAPHS - REVENUE, EXPENDITURE, CASH, AND FUND BALANCE .	3 - 5
RECAPITULATION OF FUNDS . . . . .	6
ACCRUAL BALANCE SHEET. . . . .	7
BREAKOUT OF CASH AND INVESTMENTS . . . . .	8
MODIFIED ACCRUAL REVENUE SCHEDULE . . . . .	9
EXPENDITURE SUMMARY BY OBJECT . . . . .	10
FOOD SERVICE INCOME AND EXPENSE . . . . .	11
EXPENDITURE SUMMARY BY BUILDING . . . . .	12
EXPENDITURE SUMMARY BY PROGRAM . . . . .	13 - 15
GLOSSARY . . . . .	16 - 17
PURCHASING REPORTS . . . . .	18 - 43



TO: Board of Education

DATE: August 7, 2019

FROM: Patricia Bedborough, CPA

RE: Executive Summary May 2019

#### Abstract

The May financial reports are attached. The revenues received are behind of the collection from last year. We have not received our local taxes paid under protest amount and should receive this in June. The good news that our taxes paid under protest for 2018 decreased to \$28,032,642 from last year's \$44,861,283. With this is some bad news as well. Our amount that has been settled from past protests has increased by 30% from prior year. This will most likely result in a lower collection rate than budgeted. Following a meeting with the county, we were also told that many current taxpayers are delinquent in their payments. We will keep you posted as we know more about this situation. We have collected \$2.4 million greater than budgeted for Financial Institution Tax. This will offset the impending lower revenue from our tax payers. One additional line item of note is the increase of interest income. We have received over \$1 million in operating funds this year. The expenditures are slightly above the operating expenses from last year; however, we are in line with the budget spending. A portion to this is from payroll expenses include a payout of approximately \$400,000 for retirees from last year that selected a payout. All financials have the revised budget included.

#### Future Issues

The following issues are still pending and could affect district finances in the future:

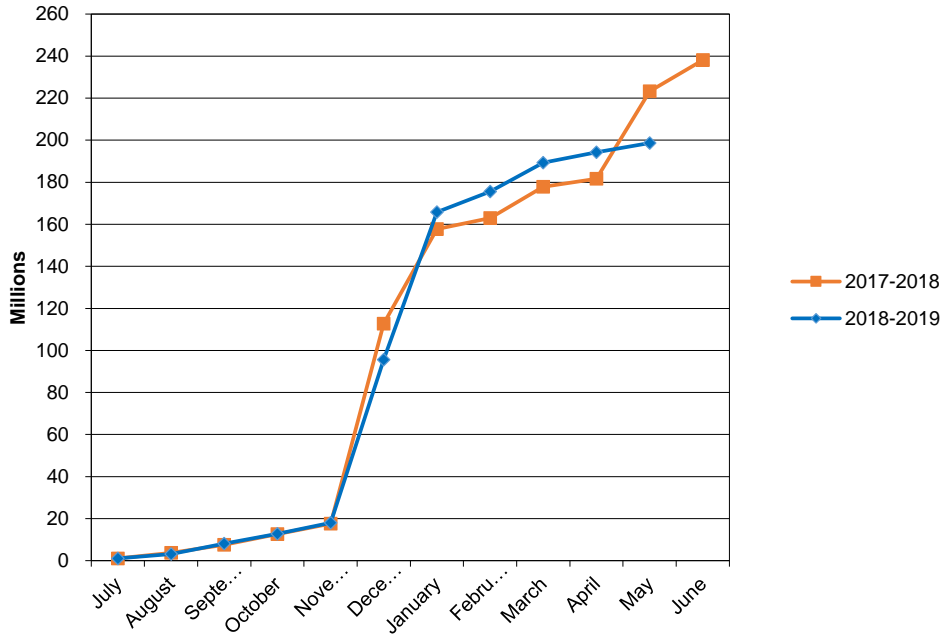
1. Health Insurance Costs – Higher health costs are a large portion of our benefit expenses. We have bid our pharmacy benefit manager through Business Health Coalition and with this, we will have substantial savings over market trends for our pharmacy beginning with October 1, 2018. We have opened our near site clinic for our employees and staff effective August. When looking at costs for 2019, we will have a zero dollar increase in premiums. We finished the 2018 year at a surplus. We experienced lower high cost cases and savings from our increased pharmacy rebates from our re-negotiated contract with Express Scripts.
2. Commercial Property Assessments Appeals – As you are aware this has been a struggle over the last several years. We have seen our collection rate fluctuate due to these settlements. We worked with the state auditor's office last year and have calculated an additional \$3.7 million in recoupment. We continue

to work with St. Louis County. Our settlements through January have increased from \$100,000,000 in total from last year in AV to \$130,000,000 for July – January. This will most likely result in a collection rate lower than our budgeted 97%.

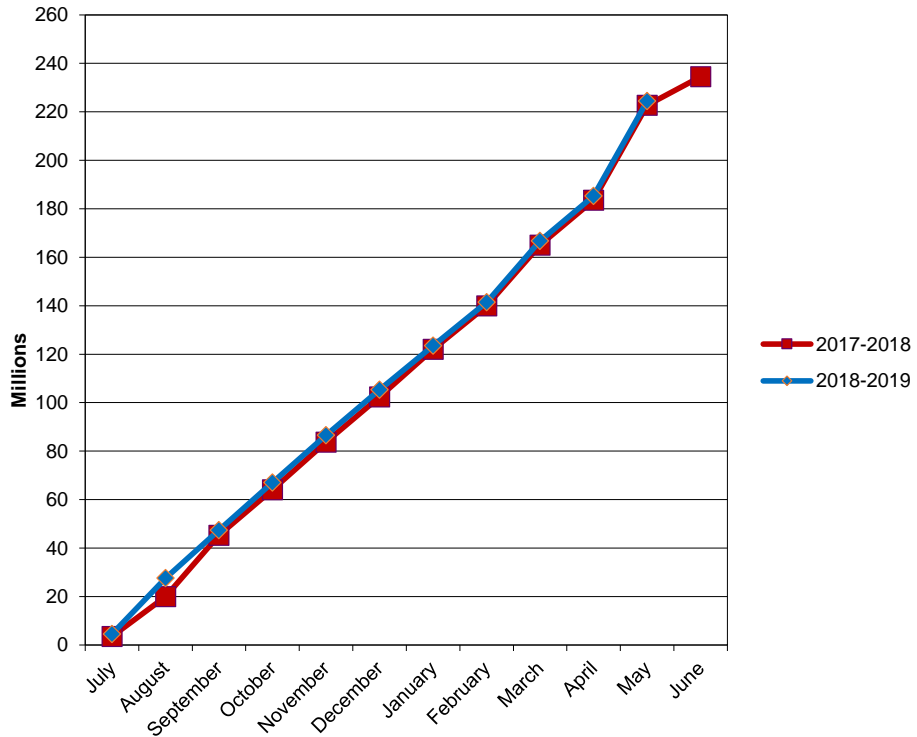
3. New Construction Assessments - In September we received our final amounts from St. Louis County. We had another strong year with new construction.
4. Interest Income –Interest rates are continuing to increase. As we make our investment of funds, we will be able to project an interest income this year. Our interest from our banking account is holding strong.
5. State Revenue –DESE will be adjusting the State Adequacy Target for the formula revenues. The State Adequacy Target is still well below the amount determined by the original formula legislation.
6. Spot Market Purchases – For information purposes, fiscal year-to-date purchases under the spot market procurement policy are as follows:

Fuel	\$	507,316.45
Paper	\$	187,577.20
Trash Liner	\$	52,491.00
Produce:	\$	89,295.00

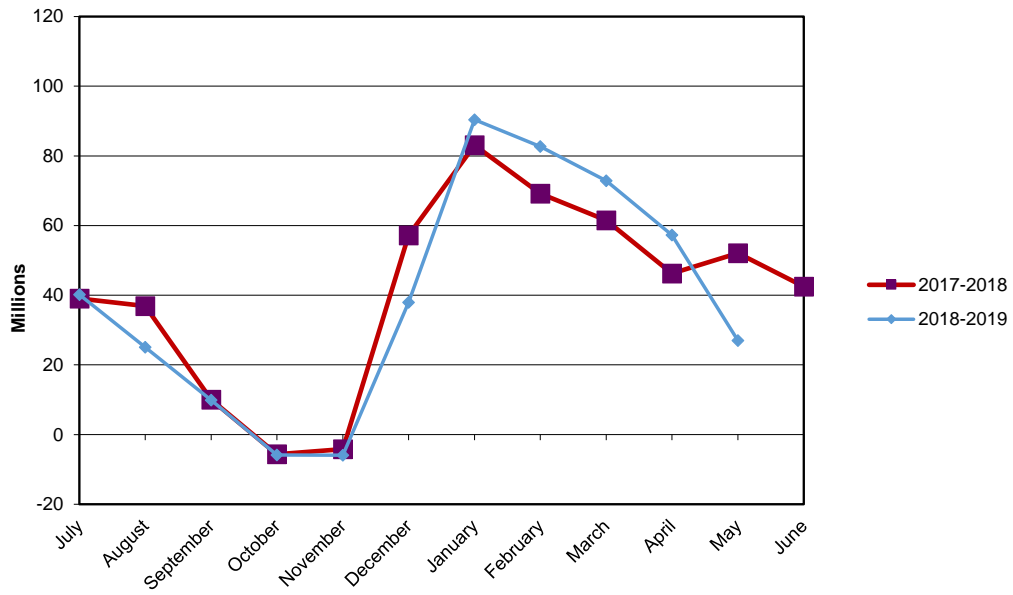
## PARKWAY SCHOOL DISTRICT ACTUAL OPERATING REVENUE

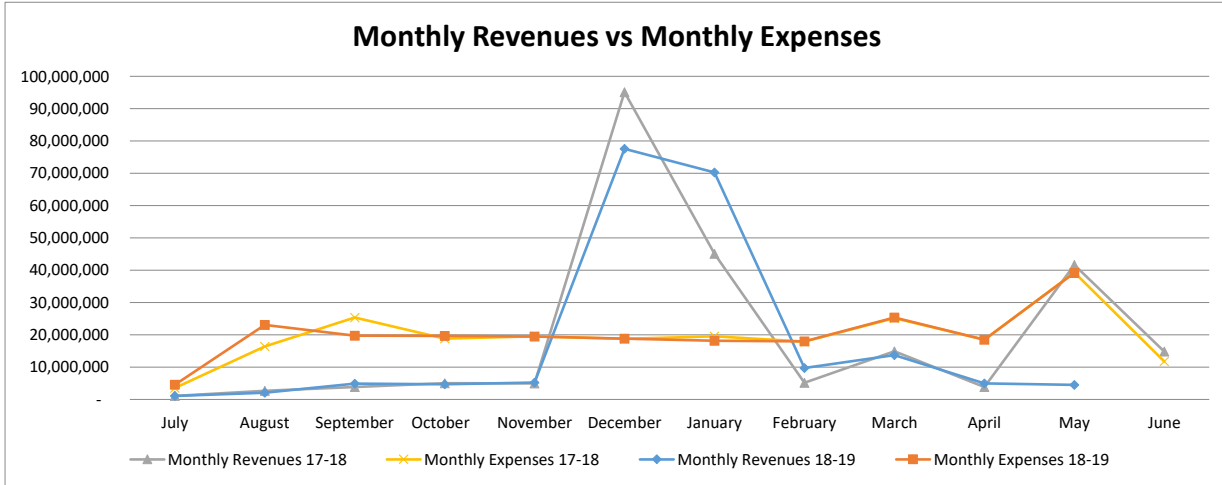
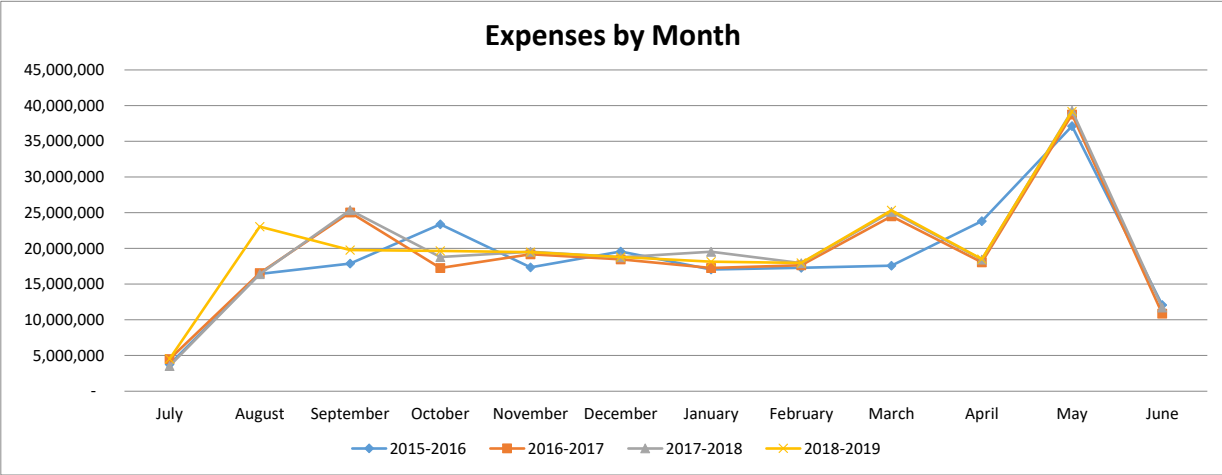
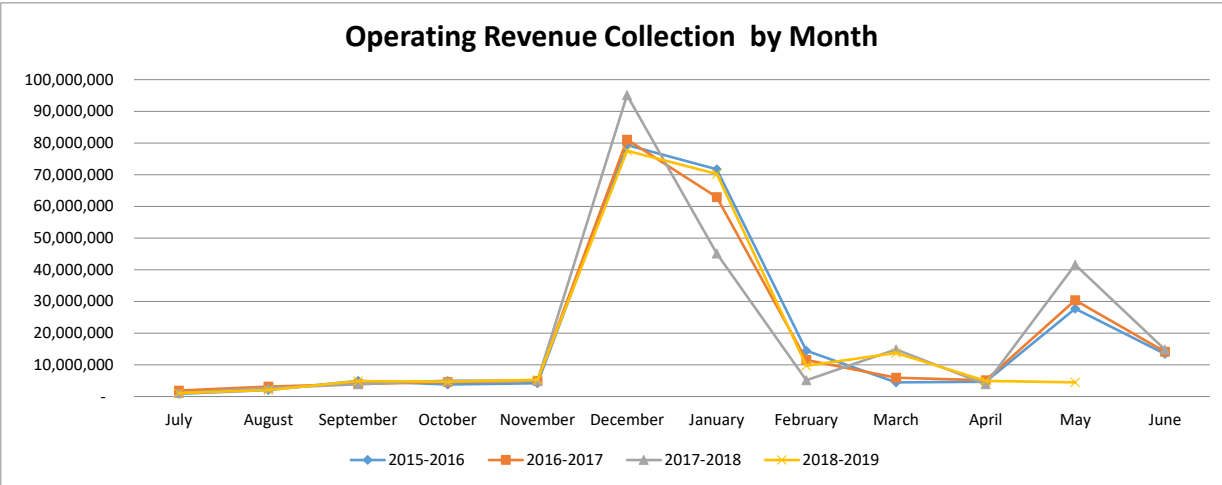


## PARKWAY SCHOOL DISTRICT ACTUAL OPERATING EXPENDITURES



# PARKWAY SCHOOL DISTRICT OPERATING FUND CASH AND INVESTMENTS





**Parkway School District  
Recapitulation of Funds  
Budget 2018-2019 With Restatement of Opening Balances**

FY2019 Full Year Projection

	<b>Operating</b>	<b>Debt Service</b>	<b>Capital Projects</b>	<b>2014 Bond Issue</b>	<b>2018 Bond Issue</b>	<b>All Funds</b>
Beginning Fund Balance	46,492,486	36,717,985	2,253,613	17,496,421	-	102,960,505
Revenues	240,149,043	23,299,881	7,758,824	15,000	59,877,000	331,099,748
Expenses	238,692,339	26,488,648	3,882,730	17,511,421	10,610,000	297,185,138
Ending Fund Balance	47,949,190	33,529,218	6,129,707	-	49,267,000	136,875,115

ACTUAL FY19 THROUGH 5/31/19

	<b>Operating</b>	<b>Debt Service</b>	<b>Capital Projects</b>	<b>2014 Bond Issue</b>	<b>2018 Bond Issue</b>	<b>All Funds</b>
Beginning Fund Balance	46,492,486	36,717,985	2,253,613	17,496,421	-	102,960,505
Revenues	198,666,261	19,800,187	6,324,468	176,599	59,876,057	284,843,572
Expenses	224,443,881	23,112,317	2,137,600	15,467,875	3,176,287	268,337,960
Ending Fund Balance	20,714,866	33,405,855	6,440,481	2,205,145	56,699,770	119,466,116

ACTUAL FY18 THROUGH 5/31/18

	<b>Operating</b>	<b>Debt Service</b>	<b>Capital Projects</b>	<b>2014 Bond Issue</b>	<b>2018 Bond Issue</b>	<b>All Funds</b>
Beginning Fund Balance	44,415,182	13,767,360	652,502	38,079,930	-	96,914,974
Revenues	223,304,311	53,053,450	3,005,952	138,904	-	279,502,617
Expenses	222,722,934	59,338,985	2,750,916	14,567,840	-	299,380,675
Ending Fund Balance	44,996,559	7,481,825	907,538	23,650,994	-	77,036,916



**PARKWAY SCHOOL DISTRICT  
ACCUAL BALANCE SHEET  
May 31, 2019**

	<b>TOTAL- ALL FUNDS 5/31/2019</b>	<b>TOTAL- ALL FUNDS 5/31/2018</b>
<b>ASSETS</b>		
Cash & Investments	\$ 145,346,404	98,945,763
Accounts Receivable	\$ 219,335	256,860
Inventories	\$ 763,977	659,030
Prepaid Expenses	\$ 1,991,894	1,400,157
Land	\$ 3,457,837	3,457,837
Land Improvements	\$ 17,072,007	18,034,643
Buildings/Improvements	\$ 163,361,982	151,631,814
Construction in Progress	\$ 50,522,194	52,539,700
Equipment	\$ 12,674,728	13,815,316
<b>Total Assets</b>	<b>\$ 395,410,358</b>	<b>340,741,120</b>
<b>LIABILITIES &amp; FUND BALANCE</b>		
Accounts Payable - Operating Funds	\$ 875,988	1,101,082
Accounts Payable - Bond Issue Funds	\$ 25,864	34,171
Wages, Payroll Taxes, and Benefits Payable	\$ 8,373,502	8,123,091
Bonds Payable	\$ 190,760,000	201,620,000
Interest Payable	\$ 2,578,845	1,924,587
Liability for Compensated Absences	\$ 1,502,251	1,432,869
Liability for Early Retirement	\$ 902,168	1,932,641
<b>Total Liabilities</b>	<b>\$ 205,018,618</b>	<b>216,168,441</b>
Bond Issue Fund Balance	\$ 58,904,915	23,650,994
Debt Service Fund Balance	\$ 33,405,855	7,481,825
Capital Projects Fund Balance	\$ 6,440,481	907,538
Equity in Fixed Assets less Long Term Liabilities	\$ 51,345,484	32,569,213
Medical Fund Balance	\$ 19,580,140	14,966,550
Operating Fund Balance	\$ 20,714,866	44,996,559
<b>Total Fund Balance</b>	<b>\$ 190,391,740</b>	<b>124,572,679</b>
<b>TOTAL LIABILITIES &amp; FUND BALANCE</b>	<b>\$ 395,410,358</b>	<b>340,741,120</b>

**BREAKOUT OF CASH & INVESTMENT BALANCE**

	<u>5/31/2019</u>	<u>5/31/2018</u>
MEDICAL FUND CASH	19,580,140	14,966,550
DEBT SERVICE FUND CASH	33,405,664	7,460,503
DEBT SERVICE FUND INVESTMENTS	190	7,775
BOND ISSUE FUND CASH	58,871,246	5,741,354
BOND ISSUE FUND INVESTMENTS	7,805	18,726,893
CAPITAL PROJECTS FUND CASH	6,531,807	-
OPERATING FUND CASH	26,949,552	52,042,688
<b>TOTAL</b>	<b>145,346,404</b>	<b>98,945,763</b>

**RESTRICTED RESERVE**

	<u>5/31/2019</u>	<u>5/31/2018</u>
FOOD SERVICE	285,301	507,330
MEDICAL BENEFITS	19,580,140	14,966,550
STUDENT ACTIVITY	3,301,696	3,074,441
<b>TOTAL</b>	<b>23,167,137</b>	<b>18,548,321</b>

PARKWAY SCHOOL DISTRICT  
MODIFIED ACCRUAL REVENUE SCHEDULE  
TOTAL ALL FUNDS

	YEAR TO DATE 5-31-2019				YEAR TO DATE 5-31-2018			
	BUDGETED REVENUE	REVENUE REALIZED	% REALIZED	BALANCE TO BE REALIZED	REVENUE** 6/30/2018	REVENUE REALIZED	% REALIZED	BALANCE TO BE REALIZED
<b>LOCAL</b>								
Property Taxes	169,622,577	143,644,534	84.68%	25,978,043	168,199,861	168,166,713	99.98%	33,148
Sales Tax	15,819,210	11,917,244	75.33%	3,901,966	15,440,981	11,303,704	73.21%	4,137,277
M&M Surtax	4,733,790	3,066,005	64.77%	1,667,785	4,857,510	4,887,833	100.62%	(30,323)
Food Service	4,070,811	4,047,777	99.43%	23,034	4,209,014	4,100,418	97.42%	108,596
Other Local	10,662,039	10,143,583	95.14%	518,456	9,245,144	8,098,179	87.59%	1,146,965
VICC-VST Revenue	7,431,350	2,598,087	34.96%	4,833,263	7,890,932	2,525,803	32.01%	5,365,129
<b>TOTAL LOCAL</b>	<b>212,339,777</b>	<b>175,417,230</b>	<b>82.61%</b>	<b>36,922,547</b>	<b>209,843,442</b>	<b>199,082,650</b>	<b>94.87%</b>	<b>10,760,792</b>
<b>INTEREST</b>	<b>894,906</b>	<b>1,104,933</b>	<b>123.47%</b>	<b>(210,027)</b>	<b>798,119</b>	<b>707,027</b>	<b>88.59%</b>	<b>91,092</b>
<b>COUNTY</b>	<b>3,316,254</b>	<b>3,316,254</b>	<b>100.00%</b>	<b>-</b>	<b>3,299,694</b>	<b>3,080,447</b>	<b>93.36%</b>	<b>219,247</b>
<b>STATE</b>								
Basic Formula	2,413,326	2,233,464	92.55%	179,862	2,702,394	2,480,335	91.78%	222,059
Classroom Trust	6,568,938	5,324,822	81.06%	1,244,116	6,406,422	5,428,949	84.74%	977,473
Transportation	1,230,001	1,127,673	91.68%	102,328	1,168,043	1,070,501	91.65%	97,542
Other State	1,451,413	1,919,488	132.25%	(468,075)	1,998,855	1,789,425	89.52%	209,430
<b>TOTAL STATE</b>	<b>11,663,678</b>	<b>10,605,447</b>	<b>90.93%</b>	<b>1,058,231</b>	<b>12,275,714</b>	<b>10,769,210</b>	<b>87.73%</b>	<b>1,506,504</b>
<b>FEDERAL</b>								
Federal Food Service	2,112,600	1,910,371	90.43%	202,229	2,145,449	1,942,941	90.56%	202,508
Other Federal Entitlements	3,287,735	1,548,480	47.10%	1,739,255	2,991,905	2,308,012	77.14%	683,893
<b>TOTAL FEDERAL</b>	<b>5,400,335</b>	<b>3,458,851</b>	<b>64.05%</b>	<b>1,941,484</b>	<b>5,137,354</b>	<b>4,250,953</b>	<b>82.75%</b>	<b>886,401</b>
<b>OTHER FINANCING SOURCES</b>								
Transportation Reimbursement	2,948,874	1,342,366	45.52%	1,606,508	2,884,503	1,815,160	62.93%	1,069,343
Tuition From Other Districts	50,000	98,780	197.56%	(48,780)	206,142	161,819	78.50%	44,323
Sale Of Property	35,219	38,034	107.99%	(2,815)	35,219	29,141	82.74%	6,078
<b>TOTAL OTHER FINANCING SOURCES</b>	<b>3,034,093</b>	<b>1,479,180</b>	<b>48.75%</b>	<b>1,554,913</b>	<b>3,125,864</b>	<b>2,006,120</b>	<b>64.18%</b>	<b>1,119,744</b>
<b>SUB-TOTAL OPERATING REVENUE</b>	<b>236,649,043</b>	<b>195,381,895</b>	<b>82.56%</b>	<b>41,267,148</b>	<b>234,480,187</b>	<b>219,896,407</b>	<b>93.78%</b>	<b>14,583,780</b>
<b>STUDENT ACTIVITIES</b>	<b>3,500,000</b>	<b>3,284,366</b>	<b>93.84%</b>	<b>215,634</b>	<b>3,623,837</b>	<b>3,407,904</b>	<b>94.04%</b>	<b>215,933</b>
<b>TOTAL OPERATING REVENUE</b>	<b>240,149,043</b>	<b>198,666,261</b>	<b>82.73%</b>	<b>41,482,782</b>	<b>238,104,024</b>	<b>223,304,311</b>	<b>93.78%</b>	<b>14,799,713</b>
<b>NON-OPERATING REVENUES</b>								
2019 Bond Issue	59,877,000	59,876,057	0.00%	943	-	-	#DIV/0!	-
Bond Issue Interest/Premium	15,000	176,599	1177.33%	(161,599)	302,657	138,904	45.89%	163,753
Refunding Bond Issuance	-	-	0.00%	-	27,405,000	-	0.00%	27,405,000
Refunding Bond Issue Premium	-	-	0.00%	-	2,276,429	-	0.00%	2,276,429
Debt Service Property Taxes	22,178,803	18,782,074	84.68%	3,396,729	22,185,774	22,181,402	99.98%	4,372
Debt Service Interest/Premium	505,192	402,227	79.62%	102,965	729,102	2,878,902	394.86%	(2,149,800)
Debt Service County Revenue	615,886	615,886	100.00%	-	642,409	27,993,146	4357.53%	(27,350,737)
Cap. Projects Property Taxes	6,775,850	5,738,115	84.68%	1,037,735	2,263,855	2,263,408	0.00%	447
Capital Projects Other	561,179	281,452	50.15%	18,548	412,470	116,670	0.00%	295,800
Capital Projects Grants	121,561	-	0.00%	-	290,055	290,055	0.00%	-
Marketing Agreement	300,000	304,583	101.53%	-	378,750	335,583	88.60%	43,167
Capital Interest/Premium	234	318	135.90%	(84)	236	236	100.00%	(0)
<b>TOTAL ALL REVENUE SOURCES</b>	<b>331,099,748</b>	<b>284,843,572</b>	<b>86.03%</b>	<b>46,256,176</b>	<b>294,990,760</b>	<b>279,502,617</b>	<b>94.75%</b>	<b>15,488,143</b>

EXPENDITURE SUMMARY BY OBJECT  
TOTAL ALL FUNDS  
May 31, 2019

	BUDGET	ACTUAL	%	ACTUAL**	ACTUAL	%	CHANGE FROM PRIOR YEAR	
	2018-2019	EXPENDITURES YTD 5/31/2019	EXPENDED 2018-2019	EXPENDITURES 06/30/2018	EXPENDITURES YTD 5/31/2018	EXPENDED 2017-2018	\$	%
<b>SALARIES</b>								
Certificated	100,457,728	98,752,946	98.30%	98,362,989	97,006,994	98.62%	1,745,952	-0.32%
Classified	38,863,174	34,216,941	88.04%	37,714,509	33,973,158	90.08%	243,783	-2.04%
Administrative	11,987,413	11,198,696	93.42%	11,740,688	10,848,992	92.41%	349,704	1.02%
<b>TOTAL SALARIES</b>	<b>151,308,315</b>	<b>144,168,583</b>	<b>95.28%</b>	<b>147,818,186</b>	<b>141,829,144</b>	<b>95.95%</b>	<b>2,339,439</b>	<b>-0.67%</b>
<b>BENEFITS</b>								
Retirement, Social Security and Medicare	25,037,375	24,452,106	97.66%	25,027,067	24,103,768	96.31%	348,338	1.35%
Medical, Dental and Life Insurance	28,999,615	26,858,679	92.62%	27,759,590	26,873,852	96.81%	(15,173)	-4.19%
<b>TOTAL BENEFITS</b>	<b>54,036,990</b>	<b>51,310,785</b>	<b>94.95%</b>	<b>52,786,657</b>	<b>50,977,620</b>	<b>96.57%</b>	<b>333,165</b>	<b>-1.62%</b>
<b>PURCHASED SERVICES</b>								
Substitute Services	2,948,473	2,710,667	91.93%	3,108,104	3,066,040	98.65%	(355,373)	-6.71%
Tuition	148,000	79,165	53.49%	137,925	133,793	97.00%	(54,628)	-43.51%
Professional Services	2,848,330	1,907,513	66.97%	1,876,035	1,935,061	103.15%	(27,548)	-36.18%
Audit	34,000	33,800	99.41%	29,000	29,000	100.00%	4,800	-0.59%
Technical Services	92,400	112,746	122.02%	156,988	102,982	65.60%	9,764	56.42%
Legal Services	200,000	151,061	75.53%	171,663	140,278	81.72%	10,783	-6.19%
Property Services	2,184,431	1,895,735	86.78%	2,181,468	1,937,965	88.84%	(42,230)	-2.05%
Travel & Contracted Trans.	2,313,554	1,392,742	60.20%	2,354,238	1,622,579	68.92%	(229,837)	-8.72%
Property Insurance	864,809	823,526	95.23%	830,850	780,247	93.91%	43,279	1.32%
Liability Insurance	847,639	837,432	98.80%	801,690	802,234	100.07%	35,198	-1.27%
Other Purchased Services	1,686,392	1,282,079	76.02%	1,664,595	1,131,515	67.98%	150,564	8.05%
<b>TOTAL PURCHASED SERVICES</b>	<b>14,168,028</b>	<b>11,226,466</b>	<b>79.24%</b>	<b>13,312,556</b>	<b>11,681,694</b>	<b>87.75%</b>	<b>(455,228)</b>	<b>-8.51%</b>
<b>CONSUMABLES</b>								
General Supplies	3,320,234	1,219,745	36.74%	3,542,213	3,550,496	100.23%	(2,330,751)	-63.50%
Instructional Supplies	8,320,158	7,648,680	91.93%	6,437,240	5,521,290	85.77%	2,127,390	6.16%
Library Books	279,575	254,415	91.00%	272,414	262,659	96.42%	(8,244)	-5.42%
Gasoline/Diesel	635,500	587,933	92.52%	435,692	124,476	28.57%	463,457	63.95%
Energy Services	4,072,900	2,939,977	72.18%	3,989,929	3,105,834	77.84%	(165,857)	-5.66%
Food Service Supplies	3,000,000	2,377,277	79.24%	2,462,106	2,640,876	107.26%	(263,599)	-28.02%
<b>TOTAL CONSUMABLES</b>	<b>19,628,367</b>	<b>15,028,027</b>	<b>76.56%</b>	<b>17,139,594</b>	<b>15,205,631</b>	<b>88.72%</b>	<b>(177,604)</b>	<b>-12.15%</b>
<b>OPERATING LEASES</b>	<b>50,639</b>	<b>41,215</b>	<b>81.39%</b>	<b>37,823</b>	<b>37,823</b>	<b>100.00%</b>	<b>3,392</b>	<b>-18.61%</b>
<b>SUBTOTAL OPERATING EXPENSES</b>	<b>239,192,339</b>	<b>221,775,076</b>	<b>92.72%</b>	<b>231,094,816</b>	<b>219,731,912</b>	<b>95.08%</b>	<b>2,043,164</b>	<b>-2.36%</b>
<b>STUDENT ACTIVITIES</b>	<b>3,500,000</b>	<b>2,668,805</b>	<b>76.25%</b>	<b>3,431,904</b>	<b>2,991,022</b>	<b>87.15%</b>	<b>(322,217)</b>	<b>-10.90%</b>
<b>ANTICIPATED EXPENDITURE SAVINGS</b>	<b>(4,000,000)</b>	<b>-</b>	<b>0.00%</b>	<b>-</b>	<b>-</b>	<b>0.00%</b>	<b>-</b>	<b>0.00%</b>
<b>TOTAL OPERATING EXPENSES</b>	<b>238,692,339</b>	<b>224,443,881</b>	<b>94.03%</b>	<b>234,526,720</b>	<b>222,722,934</b>	<b>94.97%</b>	<b>1,720,947</b>	<b>-0.94%</b>
<b>CAPITAL OUTLAY - NON BOND EXPENSES</b>								
Land Improvement	100,000	25,841	25.84%	439,404	365,580	83.20%	(339,739)	-57.36%
Building Alterations	130,000	-	0.00%	109,544	104,389	95.29%	(104,389)	-95.29%
General Equipment	641,478	219,174	34.17%	592,157	1,656,712	279.78%	(1,437,538)	-245.61%
Instructional Equipment	861,619	208,659	24.22%	303,333	137,106	45.20%	71,553	-20.98%
Technology Equipment	200,000	168,286	84.14%	209,280	69,090	33.01%	99,196	51.13%
Student Activity	100,000	144,293	144.29%	96,799	79,524	82.15%	62,144	62.14%
Vehicles	240,000	149,853	62.44%	5,080	5,080	100.00%	144,773	-37.56%
School Buses	1,278,159	1,010,196	79.04%	1,159,675	-	100.00%	1,010,196	-20.96%
<b>TOTAL CAPITAL OUTLAY</b>	<b>3,551,256</b>	<b>1,926,302</b>	<b>54.24%</b>	<b>2,915,272</b>	<b>2,417,481</b>	<b>82.92%</b>	<b>(491,179)</b>	<b>-28.68%</b>
<b>2014 BOND ISSUE EXPENDITURES</b>	<b>17,511,421</b>	<b>15,467,875</b>	<b>88.33%</b>	<b>20,886,166</b>	<b>14,567,840</b>	<b>69.75%</b>	<b>900,035</b>	<b>18.58%</b>
<b>2018 BOND ISSUE EXPENDITURES</b>	<b>10,610,000</b>	<b>3,176,287</b>	<b>29.94%</b>	<b>-</b>	<b>-</b>	<b>0.00%</b>	<b>3,176,287</b>	<b>29.94%</b>
<b>CAPITAL FUND - BUS LEASES</b>	<b>331,474</b>	<b>211,298</b>	<b>63.74%</b>	<b>328,980</b>	<b>333,435</b>	<b>101.35%</b>	<b>(122,137)</b>	<b>-37.61%</b>
<b>DEBT SERVICE - GO BONDS</b>	<b>26,488,648</b>	<b>23,112,317</b>	<b>87.25%</b>	<b>30,288,090</b>	<b>59,338,985</b>	<b>195.92%</b>	<b>(36,226,668)</b>	<b>-108.66%</b>
<b>GRAND TOTAL EXPENSES</b>	<b>297,185,138</b>	<b>268,337,960</b>	<b>90.29%</b>	<b>288,945,228</b>	<b>299,380,675</b>	<b>103.61%</b>	<b>(31,042,714)</b>	<b>-13.32%</b>

**FOOD SERVICE  
STATEMENT OF INCOME AND EXPENSE  
May 31, 2019**

		<u>BUDGET FY19</u>	<u>CURRENT MONTH</u>	<u>ACTUAL EXPENDITURES YTD 5/31/2019</u>	<u>% EXPENDED</u>	<u>PRIOR YEAR ACTUAL FY18</u>	<u>PRIOR YEAR TO DATE May 2018</u>	<u>PRIOR YEAR % EXPENDED</u>
<b>RESERVE FOOD SERVICE SURPLUS</b>	-80.7%		\$362,630	\$108,211		\$135,350	\$561,087	
<b>INCOME</b>								
<b>LOCAL</b>	1103.9%	4,070,811	\$323,620	\$4,047,777	99.43%	\$4,209,014	\$336,225	7.99%
<b>STATE</b>	976.4%	38,039	\$2,170	\$23,429	61.59%	\$23,694	\$2,177	9.19%
<b>FEDERAL</b>	939.6%	2,112,600	\$198,182	\$2,105,282	99.65%	\$2,141,863	\$202,508	9.45%
<b>TOTAL INCOME</b>	1041.9%	6,221,450	\$523,972	\$6,176,488	99.28%	\$6,374,571	\$540,909	8.49%
<b>COST OF GOODS SOLD:</b>								
<b>Beginning Inventory</b>	-38.0%		\$290,157	\$167,832		\$132,849	\$270,820	203.86%
<b>Add: Purchases-Food</b>	1582.6%	3,000,000	\$152,767	\$2,377,277	79.24%	\$2,590,905	\$141,286	5.45%
<b>Purchases-Other</b>	5369.9%	236,280	\$1,374	\$225,655	95.50%	\$186,290	\$4,125	2.21%
<b>Goods Available</b>	565.7%		\$444,297	\$2,770,763		\$2,910,044	\$416,231	14.30%
<b>Less: Ending Inventory</b>	-5.8%		\$158,994	\$158,994		\$167,832	\$168,843	100.60%
<b>TOTAL COST OF GOODS</b>	955.7%	3,236,280	\$285,303	\$2,611,769	80.70%	\$2,742,212	\$247,388	9.02%
<b>GROSS MARGIN</b>	1114.5%	\$2,985,170	\$238,668	\$3,564,718	119.41%	\$3,632,360	\$293,521	8.08%
<b>OPERATION COSTS:</b>								
<b>Salaries</b>	878.3%	2,144,495	\$223,957	\$2,220,210	103.53%	\$2,359,241	\$226,949	9.62%
<b>Fringe Benefits</b>	941.7%	1,227,870	\$107,057	\$1,121,683	91.35%	\$1,176,834	\$107,680	9.15%
<b>Purchased Services</b>	96534.9%	91,716	\$4,785	\$80,458	87.73%	\$60,690	\$83	0.14%
<b>Operating Supplies</b>	2043.6%	68,955	\$1,725	\$74,291	107.74%	\$53,316	\$3,466	6.50%
<b>Credit for Services</b>	358.6%	(100,000)	(\$21,527)	(\$111,166)	111.17%	(\$128,799)	(\$24,241)	18.82%
<b>Total Operating Costs</b>	978.4%	3,433,036	\$315,997	\$3,385,476	98.61%	\$3,521,281	\$313,938	8.92%
<b>INCOME (LOSS) FROM OPERATIONS</b>	-977.9%	(447,866)	(\$77,329)	\$179,243		\$111,078	(\$20,417)	-18.38%
<b>EQUIPMENT</b>		200,000	\$0	\$2,153	1.08%	\$138,218	\$33,341	24.12%
<b>RESERVE FOOD SERVICE SURPLUS</b>	-43.8%		\$285,301	\$285,301		\$108,211	\$507,330	468.84%

**Parkway School District  
Building Location Recap Report**

Fiscal Year 2019 Through Period 11    Run Date: 06-11-2019 @ 14:09:15

	<b>Budget</b>	<b>Expended</b>	<b>Encumbrances</b>	<b>Unexpended</b>
FERN RIDGE HIGH	16,400.00	16,721.19	1,277.05	-1,598.24
CENTRAL HIGH	364,381.00	244,069.54	17,723.03	102,588.43
NORTH HIGH	288,008.00	225,900.97	7,230.73	54,876.30
WEST HIGH	338,231.00	307,389.21	29,850.33	991.46
SOUTH HIGH	478,348.00	326,234.99	45,560.20	106,552.81
SOUTHWEST MIDDLE	119,372.00	83,323.97	943.05	35,104.98
CENTRAL MIDDLE	192,990.00	109,290.87	12,258.51	71,440.62
NORTHEAST MIDDLE	170,385.00	121,045.28	7,316.83	42,022.89
SOUTH MIDDLE	134,712.00	80,204.87	-6,687.76	61,194.89
WEST MIDDLE	225,907.00	169,115.60	19,433.39	37,358.01
BARRETS ELEM.	78,502.00	52,808.18	652.79	25,041.03
BELLERIVE ELEM.	68,316.00	48,755.05	1,440.37	18,120.58
CARMAN TRAILS ELEM.	83,652.00	56,782.46	5,977.20	20,892.34
CLAYMONT ELEM.	74,442.00	65,907.22	5,326.30	3,208.48
CRAIG ELEM.	90,326.00	88,069.49	5,191.78	-2,935.27
GREEN TRAILS ELEM.	69,845.00	52,505.73	8,893.01	8,446.26
HANNA WOODS ELEM.	74,485.00	69,627.36	0.00	4,857.64
HENRY ELEM.	106,539.00	60,800.00	19,297.12	26,441.88
HIGHCROFT ELEM.	62,387.00	48,648.74	531.61	13,206.65
MASON RIDGE ELEM.	83,275.00	71,501.37	147.51	11,626.12
MCKELVEY ELEM.	109,182.00	71,155.35	9,107.73	28,918.92
OAK BROOK ELEM.	97,298.00	76,125.09	2,720.68	18,452.23
PIERREMONT ELEM.	83,195.00	54,151.29	12,718.74	16,324.97
RIVER BEND ELEM.	76,023.00	68,296.92	424.59	7,301.49
ROSS ELEM.	57,357.00	58,645.26	192.77	-1,481.03
SORRENTO SPRINGS ELEM.	56,590.00	38,683.10	5,223.50	12,683.40
SHENANDOAH VALLEY ELEM.	95,971.00	74,612.37	2,090.88	19,267.75
WREN HOLLOW ELEM.	62,266.00	52,621.16	566.53	9,078.31
<b>Grand Total for Funds 10-12</b>	<b>3,704,131.00</b>	<b>2,713,691.28</b>	<b>180,493.17</b>	<b>809,946.55</b>
<b>Grand Total for Fund 20</b>	<b>0.00</b>	<b>3,623.35</b>	<b>0.00</b>	<b>-3,623.35</b>
<b>Grand Total for Fund 30</b>	<b>0.00</b>	<b>0.00</b>	<b>0.00</b>	<b>0.00</b>
<b>Grand Total for Funds 40-41</b>	<b>54,254.00</b>	<b>75,678.00</b>	<b>34,915.30</b>	<b>-56,339.30</b>
<b>Grand Total All</b>	<b>3,758,385.00</b>	<b>2,792,992.63</b>	<b>215,408.47</b>	<b>749,983.90</b>

**Parkway School District  
Consolidated Budget - Programs Recap Report**

Fiscal Year 2019 Through Period 11    Run Date: 06-11-2019 @ 14:10:42

	<b>Budget</b>	<b>Expended</b>	<b>Encumbrances</b>	<b>Unexpended</b>
<b>SPECIAL READING</b>	17,871.00	13,654.39	347.25	3,869.36
<b>COMM ARTS</b>	202,510.00	142,788.32	7,638.40	52,083.28
<b>MATHEMATICS</b>	92,242.00	62,012.11	901.51	29,328.38
<b>FINE ARTS</b>	393,345.00	345,648.15	22,945.51	24,751.34
<b>PHYSICAL EDUCATION</b>	64,811.00	62,615.51	1,970.44	225.05
<b>SCIENCE</b>	130,491.00	92,161.46	10,809.10	27,520.44
<b>SOCIAL STUDIES</b>	108,715.00	82,870.72	6,553.44	19,290.84
<b>INSTRUCTIONAL TECHNOLOGY</b>	117,682.00	98,916.15	8,029.29	10,736.56
<b>GUIDANCE</b>	31,006.00	13,598.89	1,531.00	15,876.11
<b>ART</b>	147,208.00	134,344.17	3,650.08	9,213.75
<b>BLDG ADMIN SERVICES</b>	2,226,800.00	1,584,104.19	100,489.39	542,206.42
<b>AUDIO VISUAL SERVICES</b>	13,180.00	-603.94	-228.20	14,012.14
<b>BUSINESS EDUCATION</b>	48,677.00	25,572.12	0.00	23,104.88
<b>MODERN CLASSICAL LANG</b>	45,883.00	26,443.59	0.00	19,439.41
<b>FAMILY AND CONSUMER SC</b>	74,474.00	57,267.53	6,506.96	10,699.51
<b>INDUSTRIAL ARTS</b>	46,193.00	38,051.70	413.48	7,727.82
<b>STUDENT BODY ACT</b>	242,204.00	171,788.01	37,660.17	32,755.82
<b>DRIVERS EDUCATION</b>	920.00	288.67	0.00	631.33
<b>COOP VOC ED</b>	79,760.00	30,890.71	1,420.91	47,448.38
<b>UNIFIED STUDIES</b>	2,580.00	2,914.27	0.00	-334.27
<b>SPEECH</b>	28,911.00	17,948.66	0.00	10,962.34
<b>LIBRARY SVCS</b>	94,820.00	64,765.31	12,673.09	17,381.60
<b>HEALTH ED</b>	8,483.00	3,812.28	0.00	4,670.72
<b>EEE CAMP</b>	123,917.00	138,672.51	0.00	-14,755.51
<b>GIFTED EDUCATION</b>	212,386.00	191,762.24	443.09	20,180.67
<b>DRUG FREE SCHOOL</b>	133,408.48	121,600.36	0.00	11,808.12
<b>ADC</b>	619,443.00	702,196.47	0.00	-82,753.47
<b>SUMMER SCHOOL</b>	1,519,475.00	147,039.14	22,256.19	1,350,179.67
<b>INSTRUCTIONAL STAFFING</b>	134,616,254.86	132,772,591.91	0.00	1,843,662.95
<b>BLDG LEVEL STAFFING</b>	17,196,851.00	15,365,643.10	0.00	1,831,207.90
<b>SPECIAL SERVICES</b>	505,018.00	342,278.46	2,700.00	160,039.54
<b>ESOL</b>	15,778.00	14,053.21	68.75	1,656.04
<b>ATHLETICS</b>	1,009,781.00	949,198.10	152,847.73	-92,264.83
<b>ADULT BASIC EDUCATION</b>	1,684,775.00	1,379,129.34	11,080.43	294,565.23
<b>SWIM CLUB</b>	850,596.00	677,923.23	0.00	172,672.77
<b>EARLY CHILDHOOD</b>	1,714,276.00	1,592,395.66	4,507.19	117,373.15
<b>PRESCHOOLS</b>	2,138,430.00	2,209,039.47	7.25	-70,616.72
<b>PARK ROCK COMM ED</b>	105,000.00	53,542.28	50,800.00	657.72

**Parkway School District  
Consolidated Budget - Programs Recap Report**

Fiscal Year 2019 Through Period 11    Run Date: 06-11-2019 @ 14:10:42

	Budget	Expended	Encumbrances	Unexpended
STUDENT SERVICES	129,295.00	188,930.42	29,188.00	-88,823.42
PUPIL PERSONNEL	2,042,806.00	2,515,721.66	70,395.10	-543,310.76
HEALTH SERVICES	2,755,148.00	2,807,723.92	5,887.44	-58,463.36
GUIDANCE AND COUNSELING	205,717.00	174,808.72	250.00	30,658.28
SEB SUPPORT	11,100.00	5,106.72	106.06	5,887.22
TEACH LEARN ACCOUNTABILITY	4,627,098.00	3,073,398.16	453,620.58	1,100,079.26
PROFESSIONAL LEARNING	1,349,713.00	807,861.08	2,789.62	539,062.30
READING DIAGNOSTICS	241,845.75	195,548.57	0.00	46,297.18
EVALUATION	267,638.00	233,710.72	1,110.22	32,817.06
INSTRUC TECH LIBRARY MEDIA	952,836.00	995,279.31	51,993.94	-94,437.25
STUDENT ASSESSMENT	382,867.00	163,810.66	76,913.25	142,143.09
PROGRESS MONITORING	817,164.00	514,023.15	0.00	303,140.85
BOARD OF EDUCATION	217,455.00	187,709.05	0.00	29,745.95
SUPERINTENDENT	481,887.00	412,860.12	1,048.12	67,978.76
DISTRICT DUES	154,100.00	155,308.95	0.00	-1,208.95
LEGAL SERVICES	175,000.00	151,060.99	34,658.49	-10,719.48
DEPUTY SUPERINTENDENT	347,512.00	274,358.70	552.40	72,600.90
ASST SUPER OF STUDENT SERVICES	324,513.00	263,629.07	741.50	60,142.43
CHIEF FINANCIAL OFFICER	312,444.00	284,360.01	211.62	27,872.37
COMMUNICATIONS	953,952.00	935,851.37	27,157.65	-9,057.02
SAFETY SECURITY	1,368,648.00	1,135,405.14	157,384.87	75,857.99
SPECIAL PROJECTS	167,907.00	86,160.49	0.00	81,746.51
FINANCE	1,011,363.00	983,155.28	4,413.06	23,794.66
INTERNAL EQUIP FIN	456,360.00	311,676.11	133,774.10	10,909.79
RISK MGMT	2,261,532.00	2,092,972.08	32,682.52	135,877.40
FOOD SERVICES	6,872,016.00	5,990,559.77	416,033.88	465,422.35
PURCHASING	395,962.00	353,788.57	421.22	41,752.21
PRINT SHOP	28,336.00	8,585.85	2,461.45	17,288.70
SCHOOL STORES	440,123.00	337,279.57	21,847.78	80,995.65
WAREHOUSE	1,228,140.00	850,026.21	6,367.98	371,745.81
MAILROOM	94,053.00	72,540.72	937.29	20,574.99
TECHNOLOGY	7,243,781.00	6,651,246.66	40,008.66	552,525.68
HUMAN RESOURCES	1,143,585.00	1,002,553.32	7,628.38	133,403.30
TRANSPORTATION	6,918,901.00	6,706,321.27	74,998.06	137,581.67
SSD TRANSPORTATION	2,782,606.00	2,021,366.71	0.00	761,239.29
STUDENTS IN TRANSITION	0.00	163,033.80	36,966.20	-200,000.00
FACILITY OPERATIONS	8,198,278.00	7,094,373.11	90,792.27	1,013,112.62
FACILITY MAINTENANCE	5,209,547.00	4,355,966.18	371,481.62	482,099.20



**Parkway School District  
Consolidated Budget - Programs Recap Report**

Fiscal Year 2019 Through Period 11    Run Date: 06-11-2019 @ 14:10:42

	<b>Budget</b>	<b>Expended</b>	<b>Encumbrances</b>	<b>Unexpended</b>
<b>GROUNDS MAINTENANCE</b>	1,991,323.00	1,633,418.11	215,691.30	142,213.59
<b>PLANNING</b>	1,419,370.48	828,020.57	274,837.14	316,512.77
<b>ENVIRONMENTAL SVCS</b>	747,447.00	740,724.88	30,290.64	-23,568.52
<b>FACILITY MANAGEMENT</b>	920,866.00	605,969.19	186,201.41	128,695.40
<b>SUSTAINABILITY</b>	5,325,222.00	3,782,268.60	309,531.10	1,233,422.30
<b>REBATE PROJECTS</b>	329,946.00	-280,438.75	304,462.00	305,922.75
<b>2014 BOND</b>	22,496,421.00	15,467,875.14	1,605,507.64	5,423,038.22
<b>2018 BOND</b>	10,610,000.00	3,176,287.20	6,013,002.44	1,420,710.36
<b>DEBT SERVICE</b>	25,450,648.00	23,112,317.01	1,668.00	2,336,662.99
<b>STATE GRANTS</b>	372,071.50	210,796.68	0.00	161,274.82
<b>FEDERAL GRANTS</b>	2,443,148.00	1,833,611.96	58,886.90	550,649.14
<b>LOCAL GRANTS</b>	121,835.11	127,021.11	3,142.67	-8,328.67
<b>Grand Total for Funds 10-12</b>	<b>85,082,564.59</b>	<b>72,992,560.64</b>	<b>3,048,190.04</b>	<b>9,041,813.91</b>
<b>Grand Total for Fund 20</b>	<b>154,200,715.59</b>	<b>148,782,515.23</b>	<b>0.00</b>	<b>5,418,200.36</b>
<b>Grand Total for Fund 30</b>	<b>25,450,648.00</b>	<b>23,112,317.01</b>	<b>1,668.00</b>	<b>2,336,662.99</b>
<b>Grand Total for Funds 40-41</b>	<b>26,119,754.00</b>	<b>17,461,182.26</b>	<b>2,563,206.54</b>	<b>7,516,075.56</b>
<b>Grand Total All</b>	<b>301,463,682.18</b>	<b>265,524,862.34</b>	<b>11,626,067.02</b>	<b>24,312,752.82</b>

• **GLOSSARY**

ACCOUNTS PAYABLE - Unpaid amounts currently owed to vendors for goods and services provided.

ACCOUNTS RECEIVABLE - Revenues earned but not yet received by the District.

AMOUNT PROVIDED FOR BOND PRINCIPAL - Amount available to meet current and future bond payments.

AMOUNT TO BE PROVIDED FOR PRINCIPAL AND INTEREST - The amount of funds needed to repay remaining bonded indebtedness. This is a “memo type” entry and does not represent an actual accumulation of cash.

BONDS AND INTEREST PAYABLE - CURRENT - Amount of bond principal and interest payable in future years.

CONSTRUCTION IN PROGRESS - Amounts expended to date on construction projects not completed. When completed, this account is reduced by the total cost of the completed projects.

ENCUMBRANCES - Obligations in the form of purchase orders, contracts, salary commitments, etc. for which a budgeted appropriation has been made.

EQUITY IN GENERAL FIXED ASSETS - Represents the appropriation of funds over a number of years to acquire land, buildings / improvements, and equipment. It is an offset to the respective asset accounts.

FUND BALANCE - The excess of assets over liabilities, which represent the “net worth” of a fund.

FUNDS - The four basic funds and their purposes are:

Capital Projects (Building) - Only capital equipment and building additions / alterations can be charged to this fund. Primary sources of revenue are property / delinquent taxes, building leases, investment income and sale of bonds.

Debt Service - Bond principal, interest and fees associated with the issue and redemption of bonds are the only expenses chargeable to this fund. Primary sources of revenue are property / delinquent taxes and investment income.

General (Incidental) - Expenses not specifically chargeable to other funds are charged to this fund. Primary sources of revenue are property / delinquent taxes, sales tax, investment income, minimum guarantee, VST, textbook, transportation and food service.

Special Revenue (Teachers) - Only salaries for certificated personnel and the cost medical / dental / vision / life insurance can be charged to this fund. Primary sources of revenue are property / delinquent taxes, investment income, state utility tax, minimum guarantee and VST.

INVENTORIES - Value of consumables purchased for future use.

PREPAID EXPENSES - Services paid for in advance of use (e.g. insurance).

RESERVE - Portion of the fund balance which is segregated for a future use and, therefore, not available for future appropriation.

RESERVE FOR BUDGETED ENCUMBRANCE - Funds budgeted and encumbered but not yet spent.

RESTRICTED RESERVE - Balances in the General Fund or Capital Projects Fund restricted as to the use (e.g. future medical / dental benefits) or unspent bond issue funds.

UNREALIZED REVENUES - Revenues budgeted but not yet realized.

UNSPENT BUDGETED FUNDS - Funds budgeted but not expended or encumbered.



## FOR MONTH OF: MAY - FY19

Attached is a list (alphabetical by vendor) of purchase orders and order for payments \$500 to \$15,000 and \$15,000 + which the administration has approved in accordance with Policy #DJEBP

Reports per DIC.BP

c: Patty Bedborough, Brian Whittle, Erik Lueders

ORDER FOR PAYMENT

\$500 - \$15,000

MAY - FY19

VENDOR NAME	DOCUMENT	INVOICE	WARRANT	OBJECT	CHECK NO	AMOUNT
PANNETT, J TODD	364248	051419 TVL	REG	6343	490419	\$ 502.86
KRUEGER POTTERY	364553	64894	REG	6411	490706	\$ 503.25
ST. LOUIS SPORTSWEAR	362444	53613	052319	6411	3937	\$ 503.25
JOHNNY ON THE SPOT	363876	0347-000220864	REG	6391	490383	\$ 510.00
GRECO, FRANK	362903	SPRINGTRACK	EARLY	6319	489953	\$ 513.00
FRANCIS HOWELL SCHOO	363813	APRIL2019	EARLY	6341	490486	\$ 513.72
NASN	363738	363738		6319	0	\$ 515.00
NASN	363742	363742		6319	0	\$ 515.00
NASN	363743	363743		6319	0	\$ 515.00
HP INC	361330	6417615891	REG	6337	489825	\$ 515.00
FAMILY ARENA	364001	WATER	EARLY	6411	490211	\$ 516.00
KOEHRER, JASON	364211	051419 TVL	REG	6343	490392	\$ 518.52
NASN	363739	363739		6319	0	\$ 520.00
NASN	363741	363741		6319	0	\$ 520.00
NATL ENGLISH HONOR S	364571	14354	EARLY	6371	490519	\$ 520.00
HEARTLAND COCA-COLA	360553	6035201405	EARLY	6411	489455	\$ 523.47
SAMUEL FRENCH INC	366054	366054		6391	0	\$ 525.00
FULL COMPASS	362010	INC00899287	051619	6411	3871	\$ 528.12
HIGHCROFT RIDGE	363951	FUNDRAISER REIMB	EARLY	6411	490223	\$ 540.41
ROTH, MIKE	360427	042219 TVL	REG	6343	489617	\$ 543.46
BERTRAM, JILL	360753	042619 TVL	REG	6343	489764	\$ 543.58
AGPARTS	362198	1394719	REG	6412	490084	\$ 546.25
NOTHING BUNDT CAKES	365787	365787		6411	0	\$ 549.45
NATIONAL FOOTBALL	363855	FOOTBALLBANQUET	EARLY	6411	490244	\$ 550.00
MURREL, DEANNA	364184	051119 TVL	REG	6319	490415	\$ 559.00
BAXTER STEVE	362906	SPRINGTRACK	EARLY	6319	489928	\$ 561.00
PASTA HOUSE CATERING	361480	E32154	REG	6411	489867	\$ 567.50
WALSH, KEVIN	362421	PKWY WEST HIGH 2019	EARLY	6398	490073	\$ 570.00
AMERICAN SOLUTIONS	363419	INV04051951	REG	6411	490631	\$ 573.94
NORFOLK, BOBBY	360652	582019BN	REG	6411	489605	\$ 575.00
SAM'S CLUB DIRECT	362196	005257	EARLY	6411	490602	\$ 577.68
EDUCATIONAL THEATRE	365640	365640		6411	0	\$ 597.00
ANGEL AUDIO	363777	627	EARLY	6391	490452	\$ 600.00
PERKINS, LINDSEY	364089	050219 TVL	REG	6343	490422	\$ 623.19
NEW PIG CORPORATION	362026	22752129-00	REG	6411	489857	\$ 638.48
DELTA DENTAL OF MISS	364740	1	EARLY	6391	490476	\$ 638.57
GREAT SKATE	364857	364857		6398	0	\$ 639.00
STRONG, MARSCHNEE	364559	664	REG	6312	490766	\$ 650.00
GATEWAY SCREEN	361915	1315	REG	6411	489810	\$ 654.50
FOUR SEASONS DISTRIB	363027	59074	EARLY	6411	489949	\$ 670.14
TKO DJ'S	365007	77973-B	EARLY	6391	490614	\$ 699.00
TKO DJ'S	365002	77975-B	EARLY	6391	490614	\$ 699.00
EDUCATIONAL THEATRE	364856	364856		6411	0	\$ 730.25
RENAISSANCE HOTEL	364784	364784		6343	0	\$ 731.30
RENAISSANCE HOTEL	364785	364785		6343	0	\$ 731.30
RENAISSANCE HOTEL	364786	364786		6343	0	\$ 731.30

RENAISSANCE HOTEL	364788	364788		6343	0	\$	731.30
RENAISSANCE HOTEL	364789	364789		6343	0	\$	731.30
RENAISSANCE HOTEL	364790	364790		6343	0	\$	731.31
ALL STAR DISTRIBUTIN	364435	003877	EARLY	6411	490449	\$	734.06
MOTOR CONTROL SPECIA	364746	117451	060619	6411	3992	\$	742.00
NEWSELA INC	362398	00048269	EARLY	6411	489979	\$	750.00
PJ PRINTING	362397	10122722	052319	6411	3929	\$	780.00
LADUE SCHOOL DISTRIC	363916	680	EARLY	6312	490501	\$	800.00
INTERCULTURAL STUDEN	365614	365614		6398	0	\$	809.00
MECHANICAL SUPPLY	362962	1002236	052319	6411	3922	\$	810.00
AC SUPPLY	365580	365580		6411	0	\$	815.44
NSPA/JEA	363039	0044-0055	EARLY	6398	490246	\$	832.00
MUSIC THEATRE INTERN	364866	364866		6411	0	\$	835.00
WEST MUSIC COMPANY	360744	SI1744492	EARLY	6411	489522	\$	839.79
TKO DJ'S	365004	77974-B	EARLY	6391	490614	\$	849.00
GATEWAY SCREEN	364993	1332	REG	6411	490675	\$	850.00
ST. LOUIS SPORTSWEAR	360884	53585	050919	6411	3852	\$	856.25
ST. LOUIS CNTY TRE	362751	362751	EARLY	6391	490064	\$	900.00
ST. LOUIS CNTY TRE	362765	362765	EARLY	6391	490305	\$	900.00
SCHAEFER SIGNS	363795	7467	REG	6391	490759	\$	908.00
SSI FURNISHINGS	362732	28143	EARLY	6411	490060	\$	914.60
HP INC	365047	9009040521	EARLY	6412	490494	\$	916.64
SPORTSPRINT INC	364458	355985	060619	6411	4007	\$	919.20
MYBRANDPROMO INC	364527	8186-1	060619	6411	3994	\$	920.50
BEYOND CONSEQUENCES	365489	365489		6319	0	\$	938.00
BEYOND CONSEQUENCES	365540	365540		6319	0	\$	938.00
MIDWEST SHEET MUSIC	362899	108118	REG	6431	490149	\$	945.22
SAFE PASSAGE	364382	INVOICE052319	REG	6411	490428	\$	950.00
NASSP	364877	364877		6411	0	\$	960.40
DANCE BAG	365632	365632		6411	0	\$	975.12
AMER AIRLINES INC.	360653	19041525020	EARLY	6343	489922	\$	977.60
DOUBLETREE CHESTER	362483	39254	EARLY	6391	489942	\$	990.00
JOSTENS INC	361042	23155470	050919	6411	3834	\$	994.65
ANGEL AUDIO	362012	609	EARLY	6391	489636	\$	995.00
LIPICS INC	365472	365472		6411	0	\$	1,017.15
FLYING SPIDER	365649	365649		6398	0	\$	1,140.00
TYLER TECHNOLOGIES	363694	363694		6319	0	\$	1,200.00
HAUGEN, LISA	362749	051719 ADVANCE	EARLY	1301	489956	\$	1,320.00
SOLUTION TREE LLC.	366050	366050		6319	0	\$	1,378.00
WHITE KNIGHT LIMOUSI	365624	365624		6342	0	\$	1,545.00
AMER AIRLINES INC.	360653	19041525020	EARLY	6319	489922	\$	1,615.82
IRBY-HAWKINSON SUSAN	360683	051019 ADVANCE	EARLY	1301	489461	\$	1,685.81
AMER AIRLINES INC.	360653	19041525020	EARLY	6319	489922	\$	2,019.80
YEAGER, COURTNEY	360684	051019 ADVANCE	EARLY	1301	489524	\$	3,470.78
CROLEY, ERIN	360682	051019 ADVANCE	EARLY	1301	489443	\$	3,768.27
BERGNER, GREGORY	360681	051019 ADVANCE	EARLY	1301	489430	\$	3,966.60
					<b>TOTAL:</b>	<b>\$</b>	<b>80,234.10</b>

## PURCHASE ORDERS

\$500 - \$15,000

MAY FY 19

PO#	Vendor Name	PO Date	Order Amount	Balance	Status	1st GL Account
85190438	ACCURATE ASPHAL	05/16/2019	\$ 5,674.00	\$ 5,674.00	8 - Printed	10255AIS-6332
85190439	ACCURATE ASPHAL	05/16/2019	\$ 14,988.00	\$ 14,988.00	8 - Printed	10255AIS-6332
21190041	ALL FOR KIDZ	05/29/2019	\$ 1,531.00	\$ -	0 - Closed	10211009-6411
85190424	ALL INCLUSIVE R	05/07/2019	\$ 5,303.07	\$ 5,303.07	8 - Printed	41149030-6531-08816
85190416	ALL TYPE VACUUM	05/01/2019	\$ 3,588.00	\$ -	0 - Closed	40255012-6541
58190287	ALL VOLLEYBALL	05/21/2019	\$ 1,206.65	\$ -	0 - Closed	10141040-6411
58190276	ALLEGRA DESIGN	05/07/2019	\$ 1,500.00	\$ -	0 - Closed	11149365-6411-08048
62190493	AMAZON	05/10/2019	\$ 667.20	\$ 667.20	8 - Printed	10113650-6431
83190153	AMAZON	05/10/2019	\$ 800.00	\$ 800.00	8 - Printed	10223825-6411
62190516	AMAZON	05/31/2019	\$ 945.90	\$ 945.90	8 - Printed	10113085-6411
62190492	AMAZON	05/10/2019	\$ 1,000.00	\$ 1,000.00	8 - Printed	10228146-6411-46530
83190155	AMAZON	05/31/2019	\$ 1,000.00	\$ 1,000.00	8 - Printed	10223210-6411
62190510	AMAZON	05/22/2019	\$ 2,500.00	\$ 2,500.00	8 - Printed	10113095-6411
62190511	AMAZON	05/22/2019	\$ 2,500.00	\$ 2,500.00	8 - Printed	10113093-6411
64190007	APP GARDEN, LLC	05/03/2019	\$ 550.00	\$ -	0 - Closed	10265290-6412
63190351	ASSETGENIE, INC	05/01/2019	\$ 1,921.00	\$ -	0 - Closed	10-1617
63190355	ASSETGENIE, INC	05/03/2019	\$ 3,432.25	\$ -	0 - Closed	10-1617
63190363	ASSETGENIE, INC	05/10/2019	\$ 3,442.50	\$ -	0 - Closed	10-1617
63190368	ASSETGENIE, INC	05/20/2019	\$ 8,425.50	\$ -	0 - Closed	10-1617
32190012	BARNES & NOBLE	05/13/2019	\$ 2,547.37	\$ -	0 - Closed	11149036-6411-09832
85190432	BATTERIES PLUS	05/10/2019	\$ 1,075.00	\$ -	0 - Closed	102550DU-6411
48190292	BIRKEL ELECTRIC	05/14/2019	\$ 2,100.00	\$ -	0 - Closed	40406126-6521-00019
48190291	BIRKEL ELECTRIC	05/14/2019	\$ 2,175.00	\$ -	0 - Closed	40406126-6521-00019
85190449	BI-STATE COMPRE	05/31/2019	\$ 2,446.00	\$ 2,446.00	8 - Printed	40255025-6541
48190295	BROCK HOLDINGS	05/31/2019	\$ 6,395.00	\$ 6,395.00	8 - Printed	48406390-6521-00078
39190025	BROCK HOLDINGS	05/10/2019	\$ 15,000.00	\$ 237.37	8 - Printed	102550UK-6332
61190029	BUSCH SYSTEMS I	05/23/2019	\$ 5,845.53	\$ 5,845.53	8 - Printed	102550NV-6411 *
58190280	CALLIER'S CATER	05/14/2019	\$ 1,900.00	\$ -	0 - Closed	11149382-6411-07016
46190057	CASUAL TEES	05/09/2019	\$ 901.00	\$ -	0 - Closed	11149299-6411-09360
85190443	CATCO	05/21/2019	\$ 3,955.31	\$ -	0 - Closed	10-2150
63190354	CDW-G	05/03/2019	\$ 1,547.89	\$ -	0 - Closed	10213065-6412
63190379	CDW-G	05/31/2019	\$ 2,118.56	\$ 2,118.56	8 - Printed	10235330-6412
63190361	CDW-G	05/09/2019	\$ 2,813.00	\$ 2,813.00	8 - Printed	10162710-6412-02001
85190431	CDW-G	05/10/2019	\$ 7,640.65	\$ 7,640.65	8 - Printed	40255025-6541
62190499	CENGAGE LEARNIN	05/20/2019	\$ 6,624.00	\$ -	0 - Closed	10113091-6431
85190444	CI SELECT	05/21/2019	\$ 1,735.00	\$ 1,735.00	8 - Printed	10-2150
48190284	CI SELECT	05/03/2019	\$ 1,980.00	\$ 1,980.00	8 - Printed	48406460-6521-00084
48190296	CI SELECT	05/31/2019	\$ 2,990.00	\$ 2,990.00	8 - Printed	48406040-6521-00084
97190165	CLARKE POWER S	05/03/2019	\$ 3,200.00	\$ -	0 - Closed	10051420-6411
35190006	CLEAN CARTON CO	05/20/2019	\$ 999.00	\$ -	0 - Closed	10255511-6411
85190430	CRESCENT PARTS	05/10/2019	\$ 1,340.64	\$ 1,340.64	8 - Printed	102550DX-6411
35190004	CROWN EQUIPMENT	05/14/2019	\$ 4,288.90	\$ -	0 - Closed	40255240-6541
63190362	DATA2 CORPORATI	05/10/2019	\$ 579.12	\$ -	0 - Closed	10235320-6412
60190018	DEPT OF LABOR &	05/01/2019	\$ 3,620.00	\$ 13.57	8 - Printed	10255317-6271-05000
48190290	DODGE MOVING &	05/14/2019	\$ 13,632.40	\$ 13,632.40	8 - Printed	48406030-6521-00078

PO#	Vendor Name	PO Date	Order Amount	Balance	Status	1st GL Account
64190009	EDUCATIONPLUS	05/20/2019	\$ 600.00	\$ 600.00	8 - Printed	10265250-6319
85190420	ENERGY PETROLEU	05/03/2019	\$ 4,969.48	\$ -	0 - Closed	10255AJS-6486
61190028	ENERGYCAP, INC	05/20/2019	\$ 2,481.00	\$ -	0 - Closed	102550NW-6412
54190249	EVANGELICAL CHI	05/23/2019	\$ 5,388.94	\$ -	0 - Closed	11399060-6398-09360
85190419	F J JURCIC CO	05/03/2019	\$ 2,024.00	\$ -	0 - Closed	10255AIQ-6332
85190448	F J JURCIC CO	05/31/2019	\$ 14,147.36	\$ 14,147.36	8 - Printed	10255AIQ-6332
54190247	FISCHER'S PRO-L	05/21/2019	\$ 653.50	\$ 653.50	8 - Printed	11149334-6411-09394
62190509	FISHER SCIENTIF	05/22/2019	\$ 996.00	\$ 996.00	8 - Printed	10113121-6412
58190281	FISHER SCIENTIF	05/14/2019	\$ 1,250.15	\$ -	0 - Closed	10111BR0-6411
62190498	FOLEY, KARA	05/20/2019	\$ 2,000.00	\$ -	0 - Closed	10111308-6312
62190480	FOLLETT SCHOOL	05/03/2019	\$ 501.84	\$ 501.84	8 - Printed	10113169-6431
62190485	FOLLETT SCHOOL	05/03/2019	\$ 882.24	\$ -	0 - Closed	10113169-6431
62190481	FOLLETT SCHOOL	05/03/2019	\$ 1,821.75	\$ 1,821.75	8 - Printed	10113167-6431
62190490	FOLLETT SCHOOL	05/10/2019	\$ 1,836.00	\$ 1,836.00	8 - Printed	10113167-6431
18190024	FOLLETT SCHOOL	05/29/2019	\$ 1,900.00	\$ 1,900.00	8 - Printed	10221027-6441
62190513	FOLLETT SCHOOL	05/31/2019	\$ 1,926.76	\$ 1,926.76	8 - Printed	10113172-6431
62190479	FOLLETT SCHOOL	05/03/2019	\$ 1,953.60	\$ 1,953.60	8 - Printed	10113168-6431
62190514	FOLLETT SCHOOL	05/31/2019	\$ 2,102.52	\$ 2,102.52	8 - Printed	10113168-6431
62190482	FOLLETT SCHOOL	05/03/2019	\$ 2,134.46	\$ 2,134.46	8 - Printed	10113171-6431
62190484	FOLLETT SCHOOL	05/03/2019	\$ 2,342.56	\$ 2,342.56	8 - Printed	10113168-6431
62190478	FOLLETT SCHOOL	05/03/2019	\$ 2,834.84	\$ 2,834.84	8 - Printed	10113172-6431
62190486	FOLLETT SCHOOL	05/03/2019	\$ 2,955.78	\$ 2,955.78	8 - Printed	10113167-6431
62190483	FOLLETT SCHOOL	05/03/2019	\$ 3,106.98	\$ 3,106.98	8 - Printed	10113172-6431
62190491	FOLLETT SCHOOL	05/10/2019	\$ 3,365.98	\$ 3,365.98	8 - Printed	10113169-6431
62190515	FOLLETT SCHOOL	05/31/2019	\$ 3,461.48	\$ 3,461.48	8 - Printed	10113171-6431
62190489	FOLLETT SCHOOL	05/10/2019	\$ 5,004.26	\$ 5,004.26	8 - Printed	10113171-6431
15190048	FRANKLIN COVEY	05/21/2019	\$ 657.80	\$ 657.80	8 - Printed	10221259-6319
12190020	FRANKLIN COVEY	05/31/2019	\$ 7,500.00	\$ 7,500.00	8 - Printed	10221313-6371
54190248	FRIENDS OF KIDS	05/23/2019	\$ 1,000.00	\$ -	0 - Closed	11399060-6398-09360
50190168	FRONTENAC PROPE	05/29/2019	\$ 4,560.00	\$ -	0 - Closed	11149309-6411-08808
85190447	FULL COMPASS	05/29/2019	\$ 1,602.88	\$ 1,602.88	8 - Printed	40241980-6541
62190497	GARDNER, DOUGLA	05/20/2019	\$ 1,750.00	\$ 1,750.00	8 - Printed	10111301-6312 *
56190245	GATEWAY STRINGS	05/01/2019	\$ 697.00	\$ -	0 - Closed	10111BMM-6332
62190517	GOPHER SPORT	05/31/2019	\$ 3,303.30	\$ 3,303.30	8 - Printed	10113439-6411 *
84190011	GREAT CIRCLE	05/29/2019	\$ 2,700.00	\$ -	0 - Closed	10122200-6311
58190286	GUITAR CENTER	05/21/2019	\$ 1,941.95	\$ 1,941.95	8 - Printed	10111BQS-6411
81190050	HEARTLAND PAYME	05/14/2019	\$ 1,270.00	\$ 1,270.00	8 - Printed	10052380-6412
40190038	HERFF JONES INC	05/29/2019	\$ 6,000.00	\$ -	0 - Closed	11149265-6411-08384
48190294	HERITAGE ENVIRO	05/17/2019	\$ 732.75	\$ 732.75	8 - Printed	48406020-6521-00077
39190026	HERITAGE ENVIRO	05/14/2019	\$ 2,500.00	\$ 1,424.74	8 - Printed	102550UJ-6319
85190433	HERTZ EQUIPMENT	05/10/2019	\$ 1,660.00	\$ 1,660.00	8 - Printed	102550FU-6334
85190435	HERTZ EQUIPMENT	05/14/2019	\$ 1,737.00	\$ 1,737.00	8 - Printed	10255AIJ-6334
63190352	HEWLETT-PACKARD	05/01/2019	\$ 603.62	\$ -	0 - Closed	10213065-6412
63190359	HEWLETT-PACKARD	05/07/2019	\$ 813.62	\$ 813.62	8 - Printed	102550NV-6412
63190357	HEWLETT-PACKARD	05/03/2019	\$ 1,048.12	\$ 1,048.12	8 - Printed	10255AJQ-6412
85190418	HOME SERVICE OI	05/03/2019	\$ 1,881.63	\$ -	0 - Closed	10255AJS-6486
85190441	INTERNEER INC	05/20/2019	\$ 5,000.00	\$ -	0 - Closed	102550JJ-6412
54190244	JEFFCO TRAVEL S	05/16/2019	\$ 2,450.00	\$ -	0 - Closed	11149326-6343-08917
65190028	JEFFERSON CITY	05/07/2019	\$ 1,231.92	\$ -	0 - Closed	10213740-6311



PO#	Vendor Name	PO Date	Order Amount	Balance	Status	1st GL Account
65190030	JEFFERSON CITY	05/07/2019	\$ 1,368.80	\$ -	0 - Closed	10213740-6311
65190029	JEFFERSON CITY	05/07/2019	\$ 2,737.00	\$ -	0 - Closed	10213740-6311
58190289	JOSTENS INC	05/21/2019	\$ 1,200.00	\$ -	8 - Printed	11149365-6411-08048
73190108	KELLY PRESS	05/10/2019	\$ 750.00	\$ -	0 - Closed	11149156-6411-08363
65190031	KIRKSVILLE R-II	05/07/2019	\$ 1,120.85	\$ -	0 - Closed	10213740-6311
85190453	LAWRENCE FABRIC	05/31/2019	\$ 1,184.00	\$ -	0 - Closed	10-2150
21190040	MAESP	05/14/2019	\$ 520.00	\$ -	0 - Closed	10241035-6371
50190171	MAKE A WISH FOU	05/31/2019	\$ 6,100.00	\$ -	0 - Closed	11149680-6398-07240
18190023	MANCHESTER MUSI	05/22/2019	\$ 774.00	\$ 774.00	8 - Printed	10111AJB-6411
62190505	MANCHESTER MUSI	05/20/2019	\$ 1,400.00	\$ -	0 - Closed	10113084-6411
85190442	MARELLY LEASING	05/20/2019	\$ 1,519.15	\$ -	0 - Closed	40255053-6541-00999
62190488	MARTIN, EMILY	05/03/2019	\$ 1,116.00	\$ -	0 - Closed	10378180-6319-45100
56190270	MASSP	05/29/2019	\$ 1,645.00	\$ -	0 - Closed	102410BX-6371
50190161	MCCORMICK'S GRO	05/07/2019	\$ 611.84	\$ -	0 - Closed	11149313-6411-07240
85190446	MEADOWS MACHINE	05/23/2019	\$ 1,340.74	\$ 1,340.74	8 - Printed	102550DX-6411
85190429	MECHANICAL SUPP	05/09/2019	\$ 2,465.35	\$ -	0 - Closed	102550DX-6411
50190164	MEDCO SPORTS ME	05/10/2019	\$ 1,953.42	\$ 1,953.42	8 - Printed	10141230-6411
56190273	MERCY SPECIALIZ	05/31/2019	\$ 1,815.10	\$ 1,815.10	8 - Printed	10141570-6411
85190451	MERLO PLUMBING	05/31/2019	\$ 1,635.00	\$ -	0 - Closed	10-2150
58190283	M-F ATHLETIC CO	05/14/2019	\$ 1,860.00	\$ 1,860.00	8 - Printed	10141660-6411
32190013	MICROTEK DOCUME	05/31/2019	\$ 4,026.46	\$ -	0 - Closed	10213157-6319
97190171	MIDWEST BUS SAL	05/14/2019	\$ 14,750.00	\$ 1,409.87	8 - Printed	10051410-6411
56190259	MIDWEST SHEET M	05/10/2019	\$ 565.77	\$ -	0 - Closed	10111BMR-6411
56190253	MIDWEST SHEET M	05/07/2019	\$ 788.22	\$ -	0 - Closed	10111BMR-6411
62190496	MIDWEST SHEET M	05/13/2019	\$ 1,304.24	\$ -	0 - Closed	10111BUJ-6431
62190503	MIDWEST SHEET M	05/20/2019	\$ 2,293.46	\$ -	0 - Closed	10111BUE-6431
63190370	MINNESOTA MEMOR	05/20/2019	\$ 1,599.80	\$ -	0 - Closed	10235410-6412
63190369	MINNESOTA MEMOR	05/20/2019	\$ 2,239.80	\$ -	0 - Closed	10-1617
63190356	MINNESOTA MEMOR	05/03/2019	\$ 2,399.70	\$ -	0 - Closed	10235410-6412
85190454	MISSOURI FILTER	05/31/2019	\$ 3,100.00	\$ 3,100.00	8 - Printed	40255024-6541
85190452	MPGTANDEM	05/31/2019	\$ 1,136.27	\$ 1,136.27	8 - Printed	10255AJP-6411
62190494	MUSSO, PETER	05/10/2019	\$ 1,222.73	\$ -	0 - Closed	10378180-6319-46560
74190020	NATL BOARD/PROF	05/20/2019	\$ 950.00	\$ -	0 - Closed	10223107-6319
61190027	NEWTON DISTRIBU	05/16/2019	\$ 7,392.00	\$ 7,392.00	8 - Printed	102550NV-6411
85190421	OFFICE ESSENTIA	05/03/2019	\$ 574.08	\$ -	0 - Closed	10255AJQ-6411
45190032	OFFICE ESSENTIA	05/16/2019	\$ 709.49	\$ -	0 - Closed	10111AZT-6411
38190003	OFFICE ESSENTIA	05/20/2019	\$ 741.50	\$ 741.50	8 - Printed	10234132-6411
85190425	OFFICE ESSENTIA	05/07/2019	\$ 1,205.20	\$ -	0 - Closed	10111BJZ-6411
12190018	OFFICE ESSENTIA	05/07/2019	\$ 1,356.31	\$ 1,356.31	8 - Printed	10241243-6411
71190021	OFFICE ESSENTIA	05/23/2019	\$ 1,558.62	\$ 1,558.62	8 - Printed	40234560-6541
40190036	OFFICE ESSENTIA	05/10/2019	\$ 2,500.00	\$ 1,810.38	8 - Printed	10111497-6411-93020
10190063	OFFICE ESSENTIA	05/29/2019	\$ 9,404.43	\$ 9,404.43	8 - Printed	10241039-6411
48190293	OFFICE ESSENTIA	05/14/2019	\$ 10,760.00	\$ 10,760.00	8 - Printed	48406030-6521-00078
58190274	OFFICE ESSENTIA	05/03/2019	\$ 13,673.46	\$ 13,673.46	8 - Printed	10221205-6411
9190050	OFFICE ESSENTIA	05/03/2019	\$ 14,737.68	\$ 14,737.68	8 - Printed	10111AAD-6411 *
83190154	OVERDRIVE INC.	05/22/2019	\$ 10,000.00	\$ -	0 - Closed	10223827-6412
48190282	OVERHEAD DOOR	05/01/2019	\$ 6,855.00	\$ 6,855.00	8 - Printed	48406140-6521-00087
48190283	OVERHEAD DOOR	05/01/2019	\$ 6,855.00	\$ 6,855.00	8 - Printed	48406140-6521-00087
58190291	PALEN MUSIC CEN	05/29/2019	\$ 2,500.00	\$ 1,118.00	8 - Printed	10111BQO-6332

PO#	Vendor Name	PO Date	Order Amount	Balance	Status	1st GL Account
56190246	PANERA BREAD CO	05/01/2019	\$ 623.26	\$ -	0 - Closed	102410CA-6411
50190162	PAPPY'S SOUTH L	05/10/2019	\$ 1,942.06	\$ -	0 - Closed	11149309-6411-09208
79190015	PARENTS AS TEAC	05/31/2019	\$ 990.00	\$ -	0 - Closed	10352840-6319-04311
62190508	PASCAL LEARNING	05/20/2019	\$ 5,400.00	\$ -	0 - Closed	10398300-6412-45100
58190273	PASCO	05/03/2019	\$ 2,119.00	\$ -	0 - Closed	10111BRO-6411
48190297	PROFESSIONAL SE	05/31/2019	\$ 1,359.00	\$ 1,359.00	8 - Printed	48406390-6521-00078
85190428	PROFESSIONAL SE	05/09/2019	\$ 5,728.00	\$ 5,728.00	8 - Printed	102550KI-6332
97190168	PUNDMANN FORD	05/13/2019	\$ 1,000.00	\$ 707.53	8 - Printed	10051410-6411
58190288	PURDUE UNIVERSI	05/21/2019	\$ 2,000.00	\$ -	0 - Closed	11399010-6398-08365
58190275	REALITYWORKS IN	05/03/2019	\$ 891.45	\$ 891.45	8 - Printed	10131296-6411
63190375	RESPONDUS INC.	05/23/2019	\$ 5,345.00	\$ -	0 - Closed	10-1705
11190081	ROCKWOOD SCHOOL	05/21/2019	\$ 837.00	\$ -	0 - Closed	11149540-6398-07992
97190170	RUSH TRUCK CENT	05/13/2019	\$ 14,500.00	\$ 9,848.78	8 - Printed	10051410-6411
48190286	SCHILLER'S IMAG	05/03/2019	\$ 1,200.00	\$ 1,200.00	8 - Printed	48406160-6521-00084
54190240	SCHOLASTIC	05/13/2019	\$ 758.23	\$ -	0 - Closed	10111BJL-6411
35190005	SCHOOL DUDE	05/14/2019	\$ 5,845.84	\$ -	0 - Closed	10255516-6412
32190011	SCHOOL HEALTH C	05/10/2019	\$ 3,573.96	\$ -	0 - Closed	40213050-6541
23190048	SCHOOL SPECIALT	05/22/2019	\$ 700.42	\$ 700.42	8 - Printed	10111AQU-6411
12190019	SCHOOL SPECIALT	05/21/2019	\$ 2,038.49	\$ 2,038.49	8 - Printed	10111AEL-6411
58190272	SCHUMERT, STEPH	05/03/2019	\$ 1,500.00	\$ -	0 - Closed	11149365-6411-08155
63190377	SITY COMMUNICAT	05/29/2019	\$ 500.00	\$ 500.00	8 - Printed	10235080-6337
40190037	SIX FLAGS	05/16/2019	\$ 3,500.00	\$ -	0 - Closed	11149262-6398-08512
40190039	SIX FLAGS	05/31/2019	\$ 5,600.00	\$ -	0 - Closed	11149264-6398-07080
45190031	SPORTSPRINT INC	05/07/2019	\$ 1,740.10	\$ -	0 - Closed	11149288-6411-09112
85190440	ST. LOUIS BOILE	05/17/2019	\$ 2,323.64	\$ 2,323.64	8 - Printed	102550DX-6411
19190045	ST. LOUIS CARDI	05/10/2019	\$ 4,070.61	\$ -	0 - Closed	11149229-6411-07992
58190285	STAGE ACCENTS	05/14/2019	\$ 631.30	\$ 631.30	8 - Printed	10111BQS-6411
63190360	STAPLES	05/07/2019	\$ 743.00	\$ -	0 - Closed	10221091-6412
63190380	STAPLES	05/31/2019	\$ 1,337.40	\$ 1,337.40	8 - Printed	10223827-6412
48190288	TARKETT USA INC	05/09/2019	\$ 705.52	\$ 705.52	8 - Printed	48406020-6521-00077
85190437	TARKETT USA INC	05/14/2019	\$ 4,229.52	\$ 4,229.52	8 - Printed	40255044-6521-00791
48190289	TARKETT USA INC	05/10/2019	\$ 14,768.00	\$ 14,768.00	8 - Printed	48406020-6521-00077
85190455	TECH ELECTRONIC	05/31/2019	\$ 2,535.00	\$ 2,535.00	8 - Printed	40223010-6543
62190495	THEATRICAL RIGH	05/10/2019	\$ 675.00	\$ -	0 - Closed	10111241-6391
97190172	TRUCK CENTERS I	05/14/2019	\$ 1,953.90	\$ -	0 - Closed	10051470-6332
97190169	TRUCK CENTERS I	05/13/2019	\$ 2,500.00	\$ 1,209.41	8 - Printed	10051410-6411
85190417	UNIVERSAL CREAT	05/01/2019	\$ 3,379.11	\$ 3,379.11	8 - Printed	10255809-6411
56190257	UTOPIA ENT.	05/07/2019	\$ 630.00	\$ -	0 - Closed	11149339-6391-09360
56190272	VARSITY SPIRIT	05/29/2019	\$ 514.10	\$ 514.10	8 - Printed	11149342-6411-07440
50190172	VARSITY SPIRIT	05/31/2019	\$ 953.64	\$ -	0 - Closed	11149313-6411-09398
58190290	VARSITY SPIRIT	05/21/2019	\$ 2,481.37	\$ 2,481.37	8 - Printed	11149365-6411-08672
56190268	VARSITY SPIRIT	05/21/2019	\$ 2,583.00	\$ -	0 - Closed	11149346-6398-07440
58190292	VARSITY SPIRIT	05/29/2019	\$ 3,400.00	\$ 3,400.00	8 - Printed	10141660-6411
58190278	VARSITY SPIRIT	05/09/2019	\$ 5,026.00	\$ -	0 - Closed	11149376-6398-08672
54190241	VARSITY SPIRIT	05/13/2019	\$ 7,540.84	\$ 7,540.84	8 - Printed	11149321-6411-08760
54190251	VENKATACHALAM,	05/31/2019	\$ 1,000.00	\$ -	0 - Closed	11149321-6411-08984
85190423	VILLA LIGHTING	05/03/2019	\$ 2,795.28	\$ 2,795.28	8 - Printed	102550E0-6411
50190165	VIRCO MFG CORP	05/10/2019	\$ 4,609.54	\$ 4,609.54	8 - Printed	10111BDY-6411
54190250	WACHTER, TIFFAN	05/29/2019	\$ 1,046.21	\$ -	0 - Closed	11149321-6411-08808

<b>PO#</b>	<b>Vendor Name</b>	<b>PO Date</b>	<b>Order Amount</b>	<b>Balance</b>	<b>Status</b>	<b>1st GL Account</b>
65190032	WASHINGTON UNIV	05/07/2019	\$ 1,375.00	\$ -	0 - Closed	10213184-6319
5190039	WINNING STREAK	05/03/2019	\$ 507.00	\$ -	0 - Closed	11149110-6411-07992
54190242	WINNING STREAK	05/13/2019	\$ 668.75	\$ -	0 - Closed	11149334-6411-09394
56190267	WINNING STREAK	05/21/2019	\$ 767.75	\$ -	0 - Closed	11149359-6411-07272
50190166	WINNING STREAK	05/23/2019	\$ 811.25	\$ 811.25	8 - Printed	11149313-6411-07280
50190167	WINNING STREAK	05/23/2019	\$ 892.50	\$ -	0 - Closed	11149313-6411-07280
56190266	WINNING STREAK	05/21/2019	\$ 1,020.00	\$ 1,020.00	8 - Printed	10141570-6411
54190243	WINNING STREAK	05/13/2019	\$ 1,343.00	\$ -	0 - Closed	11149334-6411-08024
54190235	WINNING STREAK	05/01/2019	\$ 1,848.00	\$ -	0 - Closed	11149321-6411-09360
54190236	WIRED TECHNOLOG	05/03/2019	\$ 8,816.00	\$ 8,816.00	8 - Printed	102410AY-6411
64190008	WONDERLIC, INC	05/17/2019	\$ 1,362.50	\$ -	0 - Closed	10265290-6412
58190284	WOODWIND & BRAS	05/14/2019	\$ 1,825.50	\$ 1,825.50	8 - Printed	10111BQS-6411
<b>TOTAL:</b>			<b>\$ 609,384.02</b>			

**\$15,000+**  
**MAY FY19**

<b>PO#</b>	<b>Vendor Name</b>	<b>PO Date</b>	<b>Order Amount</b>	<b>Balance</b>	<b>Status</b>	<b>1st GL Account</b>
62190487	BARTON, SUSAN	05/03/2019	\$ 40,822.30	\$ -	0 - Closed	10123250-6411 *
61190026	BONFIRE INTERAC	05/07/2019	\$ 21,400.00	\$ -	0 - Closed	102550NV-6412
39190027	BROCK HOLDINGS	05/31/2019	\$ 32,773.95	\$ -	0 - Closed	10-2150
62190500	CIGNAL SYSTEMS	05/20/2019	\$ 35,712.60	\$ 35,712.60	8 - Printed	10113077-6411 *
54190239	COLLEGE BOARD-M	05/13/2019	\$ 80,085.00	\$ -	0 - Closed	11149321-6411-09632
62190501	DEMOULIN BROS &	05/20/2019	\$ 44,804.20	\$ 44,804.20	8 - Printed	10113083-6411 *
76190014	EAB GLOBAL, INC	05/10/2019	\$ 15,005.50	\$ -	0 - Closed	10234075-6371
97190166	ENERGY PETROLEU	05/03/2019	\$ 17,372.55	\$ -	0 - Closed	10051380-6486
97190167	ENERGY PETROLEU	05/09/2019	\$ 17,447.55	\$ 15.52	8 - Printed	10051380-6486
62190506	HERCULES ACHIEV	05/20/2019	\$ 28,212.00	\$ 28,212.00	8 - Printed	10113085-6411
74190021	KAGAN PROFESSIO	05/31/2019	\$ 19,195.00	\$ 19,195.00	8 - Printed	10228139-6319-46540
63190374	KAJEET, INC	05/23/2019	\$ 59,799.41	\$ -	0 - Closed	10-1705
97190173	KIESEL COMPANY	05/20/2019	\$ 17,185.05	\$ 8.55	8 - Printed	10051380-6486
97190174	KIESEL COMPANY	05/29/2019	\$ 17,522.55	\$ 17,522.55	8 - Printed	10051380-6486
48190287	MIDWEST SERVICE	05/07/2019	\$ 205,200.00	\$ 205,200.00	8 - Printed	48406020-6521-00077
39190024	PROFESSIONAL SE	05/09/2019	\$ 20,000.00	\$ 12,900.35	8 - Printed	102550UK-6332
62190504	PROJECT LEAD TH	05/20/2019	\$ 20,018.25	\$ 20,018.25	8 - Printed	10113350-6411
85190422	SCHILLER'S IMAG	05/03/2019	\$ 19,470.00	\$ 19,470.00	8 - Printed	10225400-6412-04604
63190378	SCHOOLOGY INC.	05/29/2019	\$ 144,000.00	\$ -	0 - Closed	10-1705
71190020	SHERATON WEST P	05/14/2019	\$ 28,000.00	\$ 8,220.08	8 - Printed	10234235-6391
63190364	SHI INTERNATION	05/10/2019	\$ 19,862.73	\$ -	0 - Closed	48236010-6543-00107
63190373	SHI INTERNATION	05/21/2019	\$ 59,663.36	\$ -	0 - Closed	10-1705
85190434	STARBEAM LIGHTI	05/14/2019	\$ 30,000.00	\$ 29,146.25	8 - Printed	102550E0-6411
62190507	SWEETWATER SOUN	05/20/2019	\$ 57,053.15	\$ 57,053.15	8 - Printed	10113077-6411 *
	<b>TOTAL:</b>		<b>\$ 1,050,605.15</b>			

SPOT MARKET REPORT - APRIL 2019

Purchase Order #	Date	Vendor #	Vendor Name	Comm. Code	QTY	UOM	Unit Price	Description	Object	Account Amt
61190001	07/05/18	631777	COSTCO	202				8.5 x 11 WHITE COPY PAPER - 30% RECYCLED PAPER - GP SPECTRUM		
61190001					840	EACH	\$ 29.74		1615	\$ 24,981.60
61190012	08/15/18	809084	OFFICE ESSENTIALS INCORPORATED	202				8.5 x 11 WHITE COPY PAPER - 30% RECYCLED PAPER - UNIVERSAL		
61190012					840	EACH	\$ 30.50		1615	\$ 25,620.00
61190016	09/14/18	809084	OFFICE ESSENTIALS INCORPORATED	202				8.5 x 11 WHITE COPY PAPER - 30% RECYCLED PAPER - UNIVERSAL		
61190016					840	EACH	\$ 31.90		1615	\$ 26,796.00
61190018	10/15/18	622854	CONTRACT PAPER GROUP, INC	202				8.5 x 11 WHITE COPY PAPER - 30% RECYCLED PAPER - GEORGIA PACIFIC SPECTRUM		
61190018					840	EACH	\$ 31.89		1615	\$ 26,787.60
61190023	12/20/18	632285	DUTCH HOLLOW SERVICES & SUPPLIES INC.	202				8.5 x 11 WHITE COPY PAPER - 30% RECYCLED PAPER - UNIVERSAL #20030		
61190023					840	EACH	\$ 31.72		1615	\$ 26,644.80
61190024	02/08/2019	632285	DUTCH HOLLOW SERVICES & SUPPLIES INC.	202				8.5 x 11 WHITE COPY PAPER - 30% RECYCLED PAPER - UNIVERSAL #20030		
61190024					840	EACH	\$ 31.72		1615	\$ 26,644.80
61190025	04/04/2019	632285	DUTCH HOLLOW SERVICES & SUPPLIES INC.	202				8.5 x 11 WHITE COPY PAPER - 30% RECYCLED PAPER	1615	\$ 27,484.80
61190025					840	EACH	32.72000		1615	\$ 27,484.80
61190025					80	EACH	32.72000	8.5 X 11 WHITE COPY PAPER - 30% RECYCLED PAPER	1615	\$ 2,617.60
61190025										
85190141	07/31/18	615999	FROESEL OIL CO, INC	400				RFG REG UNLEADED		
85190141					204	EACH	\$ 2.25		6486	\$ 458.80
85190141					410	EACH	\$ 2.36	ULS #2 DIESEL	6486	\$ 966.78
85190141					1	EACH	\$ 301.44	STATE AND FEDERAL TAXES AND FEES	6486	\$ 301.44
85190141					1097	EACH	\$ 2.25	RFG REG UNLEADED	6486	\$ 2,467.15
85190141										

85190171	08/17/18	615999	FROESEL OIL CO, INC	400							
85190171					591	EACH	\$	2.12	RFG REG UNLEADED		
85190171										6486	\$ 1,251.74
85190171					384	EACH	\$	2.23	ULS #2 DIESEL		
85190171										6486	\$ 855.94
85190171					1	EACH	\$	222.88	STATE AND FEDERAL TAXES AND FEES		
85190171										6486	\$ 222.88
85190171					250	EACH	\$	2.12	RFG REG UNLEADED		
85190171										6486	\$ 529.50
85190171					40	EACH	\$	2.23	ULS#2 DIESEL		
85190171										6486	\$ 89.16
85190194	08/28/18	615999	FROESEL OIL CO, INC	400							
85190194					1570	EACH	\$	2.16	RFG REG UNLEADED		
85190194										6486	\$ 3,388.06
85190194					330	EACH	\$	2.24	ULS #2 DIESEL		
85190194										6486	\$ 738.87
85190194					1	EACH	\$	410.61	STATE AND FEDERAL TAXES AND FEES		
85190194										6486	\$ 410.61
85190194					431	EACH	\$	2.16	RFG REG UNLEADED		
85190194										6486	\$ 930.10
85190199	09/04/18	615999	FROESEL OIL CO, INC	400							
85190199					1650	EACH	\$	2.13	RFG REG UNLEADED		
85190199										6486	\$ 3,512.69
85190199					375	EACH	\$	2.25	ULS #2 DIESEL		
85190199										6486	\$ 844.76
85190199					1	EACH	\$	435.98	STATE AND FEDERAL TAXES AND FEES		
85190199										6486	\$ 435.98
85190199					450	EACH	\$	2.13	RFG REG UNLEADED		
85190199										6486	\$ 958.01
85190218	09/12/18	615999	FROESEL OIL CO, INC	400							
85190218					1773	EACH	\$	2.04	RFG REG UNLEADED		
85190218										6486	\$ 3,624.01
85190218					340	EACH	\$	2.34	ULS #2 DIESEL		
85190218										6486	\$ 794.92
85190218					1	EACH	\$	447.15	STATE AND FEDERAL TAXES AND FEES		
85190218										6486	\$ 447.15
85190218					430	EACH	\$	2.04	RFG REG UNLEADED		
85190218										6486	\$ 878.92
85190231	09/25/18	615999	FROESEL OIL CO, INC	400							
85190231					1299	EACH	\$	2.10	RFG REG UNLEADED		
85190231										6486	\$ 2,726.60
85190231					342	EACH	\$	2.39	ULS #2 DIESEL		
85190231										6486	\$ 817.04
85190231					1	EACH	\$	359.89	STATE AND FEDERAL TAXES AND FEES		
85190231										6486	\$ 359.89
85190231					402	EACH	\$	2.10	RFG REG UNLEADED		
85190231										6486	\$ 843.80
85190240	10/10/18	615999	FROESEL OIL CO, INC	400							

85190240				1463	EACH	\$	2.18	RFG REG UNLEADED			
85190240									6486	\$	3,187.88
85190240				371	EACH	\$	2.44	ULS #2 DIESEL			
85190240									6486	\$	904.87
85190240				1	EACH	\$	398.81	STATE AND FEDERAL TAXES AND FEES			
85190240									6486	\$	398.81
85190240				430	EACH	\$	2.18	RFG REG UNLEADED			
85190240									6486	\$	936.97
85190265	11/08/18	642477	ENERGY PETROLEUM COMPANY	400							
85190265				1671.2	EACH	\$	2.13	NO LEAD 87 OCT RFG			
85190265									6486	\$	3,559.66
85190265				430.1	EACH	\$	2.13	NO LEAD 87 OCT RFG			
85190265									6486	\$	916.11
85190265				260	EACH	\$	2.55	#2 ULTRA LS DIESEL			
85190265									6486	\$	663.00
85190265				1	EACH	\$	294.34	FOR INVOICE 647834 FEDERAL AND STATE TAXES			
85190265									6486	\$	294.34
85190265				1	EACH	\$	75.76	FOR INVOICE 647836 FEDERAL AND STATE TAXES			
85190265									6486	\$	75.76
85190265				1	EACH	\$	45.85	FOR INVOICE 651276 FEDERAL AND STATE TAXES			
85190265									6486	\$	45.85
85190271	11/20/18	642477	ENERGY PETROLEUM COMPANY	400							
85190271				430	EACH	\$	1.96	NO LEAD 87 OCT RFG			
85190271									6486	\$	842.80
85190271				2270	EACH	\$	1.96	NO LEAD 87 OCT RFG			
85190271									6486	\$	4,449.20
85190271				230	EACH	\$	2.45	#2 ULTRA LS DIESEL			
85190271									6486	\$	563.50
85190271				1	EACH	\$	75.74	FOR INVOICE 647834 FEDERAL AND STATE TAXES			
85190271									6486	\$	75.74
85190271				1	EACH	\$	399.82	FOR INVOICE 647836 FEDERAL AND STATE TAXES			
85190271									6486	\$	399.82
85190271				1	EACH	\$	40.56	FOR INVOICE 651276 FEDERAL AND STATE TAXES			
85190271									6486	\$	40.56
85190283	12/06/18	642477	ENERGY PETROLEUM COMPANY	400							
85190283				425.1	EACH	\$	1.76	NO LEAD 87 OCT RFG			
85190283									6486	\$	748.18
85190283				1407.7	EACH	\$	1.73	NO LEAD 87 OCT RFG			
85190283									6486	\$	2,435.32

85190283				1	EACH	\$	74.88	FOR #6193473 FEDERAL AND STATE TAXES			
85190283									6486	\$	74.88
85190283				1	EACH	\$	247.94	FOR #6193474 FEDERAL AND STATE TAXES			
85190283									6486	\$	247.94
85190284	12/06/18	642477	ENERGY PETROLEUM COMPANY	400							
85190284				908	EACH	\$	1.74	NO LEAD 87 OCT RFG			
85190284									6486	\$	1,579.92
85190284				290	EACH	\$	1.74	NO LEAD 87 OCT RFG			
85190284									6486	\$	504.60
85190284				402	EACH	\$	2.32	#2 ULTRA PREM LS DIESEL			
85190284									6486	\$	931.35
85190284				1	EACH	\$	159.93	FOR #1451221 FEDERAL AND STATE TAXES			
85190284									6486	\$	159.93
85190284				1	EACH	\$	51.08	FOR #1451222 FEDERAL AND STATE TAXES			
85190284									6486	\$	51.08
85190284				1	EACH	\$	70.89	FOR #1451220 FEDERAL AND STATE TAXES			
85190284									6486	\$	70.89
85190301	01/14/19	642477	ENERGY PETROLEUM COMPANY	400							
85190301				420	EACH	\$	1.56	NO LEAD 87 OCT RFG			
85190301									6486	\$	656.75
85190301				1370	EACH	\$	1.56	NO LEAD 87 OCT RFG			
85190301									6486	\$	2,142.27
85190301				232	EACH	\$	1.93	#2 ULTRA LS DIESEL			
85190301									6486	\$	447.76
85190301				1	EACH	\$	73.97	FOR 6196918 FEDERAL AND STATE TAXES			
85190301									6486	\$	73.97
85190301				1	EACH	\$	40.91	FOR 61969201 FEDERAL AND STATE TAXES			
85190301									6486	\$	40.91
85190301				1	EACH	\$	241.30	FOR 6196919 FEDERAL AND STATE TAXES			
85190301									6486	\$	241.30
85190307	01/18/19	642477	ENERGY PETROLEUM COMPANY	400							
85190307				1561.1	EACH	\$	1.58	NO LEAD 87 OCT RFG			
85190307									6486	\$	2,466.54
85190307				425	EACH	\$	1.58	NO LEAD 87 OCT RFG			
85190307									6486	\$	671.50
85190307				1	EACH	\$	274.95	FOR 1451253 FEDERAL AND STATE TAXES			
85190307									6486	\$	274.95
85190307				1	EACH	\$	74.86	FOR 1451252 FEDERAL AND STATE TAXES			
85190307									6486	\$	74.86
85190313	02/01/2019	642477	ENERGY PETROLEUM COMPANY	400							
85190313				1485	EACH	\$	1.50	NO LEAD 87 OCT RFG			
85190313									6486	\$	2,227.50
85190313				425	EACH	\$	1.50	NO LEAD 87 OCT RFG			
85190313									6486	\$	637.50



85190313				1	EACH	\$	260.18	FOR 6202703 FEDERAL AND STATE TAXES			
85190313									6486	\$	260.18
85190313				1	EACH	\$	74.47	FOR 6202702 FEDERAL AND STATE TAXES			
85190313									6486	\$	74.47
85190333	02/20/2019	800559	KIESEL COMPANY	400							
85190333				356.6	EACH	\$	1.59	87 OCT 10% ETHANOL BLEND GASOLINE			
85190333									6486	\$	566.99
85190333				750.6	EACH	\$	1.59	87 OCT 10% ETHANOL BLEND GASOLINE			
85190333									6486	\$	1,193.45
			ENERGY PETROLEUM								
85190338	02/21/2019	642477	COMPANY	400							
85190338				335	EACH	\$	1.54	NO LEAD 87 OCT RFG			
85190338									6486	\$	515.90
85190338				793	EACH	\$	1.54	NO LEAD 87 OCT RFG			
85190338									6486	\$	1,221.22
85190338				1	EACH	\$	58.69	FOR 30643384 FEDERAL AND STATE TAXES			
85190338									6486	\$	58.69
85190338				1	EACH	\$	138.94	FOR 1454821 FEDERAL AND STATE TAXES			
85190338									6486	\$	138.94
85190338				793	EACH	\$	1.68	#2 ULTRA PREM LSD (SEASONAL)			
85190338									6486	\$	1,332.24
85190338				1	EACH	\$	72.96	FOR 30643385 FEDERAL AND STATE TAXES			
85190338									6486	\$	72.96
85190345	02/22/2019	626035	HOME SERVICE OIL CO INC	400							
85190345				2583.5	EACH	\$	1.64	RFG 87 OCT UNL REG - 1904500606			
85190345									6486	\$	4,236.94
85190345				401	EACH	\$	1.64	RFG 87 OCT UNL REG - 543427			
85190345									6486	\$	657.64
85190345				22.8	EACH	\$	1.64	RFG 87 OCT UNL REG - 1904500607			
85190345									6486	\$	37.39
								STATE AND FEDERAL TAXES AND FEES -			
85190345				1	EACH	\$	452.63	1904500607			
85190345									6486	\$	452.63
85190345				1	EACH	\$	70.25	STATE AND FEDERAL TAXES AND FEES - 543427			
85190345									6486	\$	70.25
85190345				1	EACH	\$	4.00	STATE AND FEDERAL TAXES AND FEES -			
85190345								1904500607			
									6486	\$	4.00
			ENERGY PETROLEUM								
85190348	02/22/2019	642477	COMPANY	400							
85190348				309.1	EACH	\$	1.63	NO LEAD 87 OCT RFG - 6206685			
85190348									6486	\$	503.83
85190348				1	EACH	\$	54.16	FOR 6206685 FEDERAL AND STATE TAXES			
85190348									6486	\$	54.16
85190348				1	EACH	\$	69.66	FOR 6206686 FEDERAL AND STATE TAXES			
85190348									6486	\$	69.66
85190348				397.6	EACH	\$	2.08	#2 ULTRA PREM LSD (SEASONAL) - 6206686			

85190348								6486	\$	827.01
85190362	03/19/2019	642477	ENERGY PETROLEUM COMPAN	400						
85190362					1050	EACH	1.78000 NO LEAD 87 OCT RFG			
85190362								6486	\$	1,869.00
85190362					425	EACH	1.78000 NO LEAD 87 OCT RFG			
85190362								6486	\$	756.50
85190362					1	EACH	183.97000 FOR 30643384 FEDERAL AND STATE TAXES			
85190362								6486	\$	183.97
85190362					1	EACH	74.47000 FOR 1454821 FEDERAL AND STATE TAXES			
85190362								6486	\$	74.47
85190362					350	EACH	2.18760 #2 ULTRA PREM LSD (SEASONAL)			
85190362								6486	\$	765.66
85190362					1	EACH	61.33000 FOR 30643385 FEDERAL AND STATE TAXES			
85190362								6486	\$	61.33
85190363	03/19/2019	800559	KIESEL COMPANY	400						
85190363					1080.1	EACH	1.90000 87 OCT 10% ETHANOL BLEND GASOLINE			
85190363								6486	\$	2,052.19
85190363					404.8	EACH	1.90000 87 OCT 10% ETHANOL BLEND GASOLINE			
85190363								6486	\$	769.12
85190363					200.3	EACH	2.28000 #2 CLEAR ULS DIESEL			
85190363								6486	\$	456.68
85190363					1	EACH	376.08000 STATE AND FEDERAL TAXES AND FEES			
85190363								6486	\$	376.08
85190404	04/22/2019	626035	HOME SERVICE OIL CO INC	400						
85190404					1600.1	EACH	2.18000 RFG 87 OCT UNL REG - 1907900812			
85190404								6486	\$	3,488.22
85190404					401.5	EACH	2.18000 RFG 87 OCT UNL REG - 543427			
85190404								6486	\$	875.27
85190404					1	EACH	280.34000 STATE AND FEDERAL TAXES AND FEES - 1907900812			
85190404								6486	\$	280.34
85190404					1	EACH	70.35000 STATE AND FEDERAL TAXES AND FEES - 1907900811			
85190404								6486	\$	70.35
85190406	04/22/2019	642477	ENERGY PETROLEUM COMPAN	400						
85190406					1572	EACH	2.12000 NO LEAD 87 OCT RFG			
85190406								6486	\$	3,332.64
85190406					430	EACH	2.12000 NO LEAD 87 OCT RFG			
85190406								6486	\$	911.60
85190406					306	EACH	2.12000 #2 ULTRA LS DIESEL			
85190406								6486	\$	648.72
85190406					1	EACH	275.41000 FEDERAL AND STATE TAXES AND FEES - 18014441			
85190406								6486	\$	275.41
85190406					1	EACH	75.34000 FEDERAL AND STATE TAXES AND FEES - 18014431			
85190406								6486	\$	75.34
85190406					1	EACH	53.61000 FEDERAL AND STATE TAXES AND FEES - 18014421			
85190406								6486	\$	53.61
85190418	05/03/2019	626035	HOME SERVICE OIL CO INC	400						
85190418					354.6	EACH	2.35000 RFG 87 OCT UNL REG - 1911900605			
85190418								6486		833.31

85190418					392.1 EACH		2.34000 #2 DIESEL - CLEAR 1911900604			
85190418								6486		917.51
85190418					1 EACH		68.69000 STATE AND FEDERAL TAXES AND FEES - 1911900604			
85190418								6486		68.69
85190418					1 EACH		62.12000 STATE AND FEDERAL TAXES AND FEES - 1911900605			
85190418								6486		62.12
85190420	05/03/2019	642477	ENERGY PETROLEUM COMPAN 400							
85190420					1730 EACH		2.18000 NO LEAD 87 OCT RFG			
85190420								6486		3,771.40
85190420					380 EACH		2.18000 NO LEAD 87 OCT RFG			
85190420								6486		828.40
85190420					1 EACH		303.10000 FEDERAL AND STATE TAXES AND FEES - 6219788			
85190420								6486		303.10
85190420					1 EACH		66.58000 FEDERAL AND STATE TAXES AND FEES - 6219787			
85190420								6486		66.58
97190059	09/12/18	615999	FROESEL OIL CO, INC	500						
							CONVENIENT PURCHASE ORDER FOR THE PURCHASE OF PREMIUM ULTRA LOW SULFUR #2 DIESEL FUEL FOR SCHOOL BUSES. BID #19P-30			
97190059					7500 EACH	\$	2.33 DIESEL FUEL FOR SCHOOL BUSES. BID #19P-30	6486	\$	17,467.50
97190059					7500 EACH	\$	0.00 FEDERAL OIL SPILL FEE	6486	\$	16.05
97190059					7500 EACH	\$	0.00 MO AGI TAX PER GAL	6486	\$	7.50
97190059					7500 EACH	\$	0.17 MO STATE TAX PER GAL	6486	\$	1,275.00
97190059					7500 EACH	\$	- FED SUPER FUND TAX PER GAL EXTRA	6486	\$	-
97190059					7500 EACH	\$	0.00 MO ADG INSPECTION FEE TAX PER GAL	6486	\$	5.25
97190059					7500 EACH	\$	0.00 MO USTD TRANSP LOAD FEE TAX PER GAL	6486	\$	18.75
97190063	09/26/18	800559	KIESEL COMPANY	500						
							7000 GALLONS OF PREMIUM ULTRA LOW SULFUR #2 DIESEL FUEL FOR SCHOOL BUSES.			
97190063					7000 EACH	\$	2.32 #2 DIESEL FUEL FOR SCHOOL BUSES.	6486	\$	16,240.00
97190063					7000 EACH	\$	0.00 FED. OIL SPILL FEE	6486	\$	14.98
97190063					7000 EACH	\$	0.00 MO AGI TAX PER GAL EXTRA	6486	\$	7.00
97190063					7000 EACH	\$	0.17 MO STATE TAX PER GAL	6486	\$	1,190.00
97190063					7000 EACH	\$	0.00 MO ADG INSP FEE TAX PER GAL	6486	\$	4.90
97190063					7000 EACH	\$	0.00 MO USTD TRANSP. LOAD FEE TAX PER GAL	6486	\$	17.50



97190081								PREMIUM ULTRA LOW SULFUR, #2 DIESEL FUEL			
				7350	EACH	\$	2.34	FOR SCHOOL BUSES, BID #19P-52			
97190081									6486	\$	17,191.65
97190081				7350	EACH	\$	0.00	FED OIL SPILL FEE			
97190081									6486	\$	15.73
97190081				7350	EACH	\$	0.00	MO AGI TAX PER GAL EXTRA			
97190081									6486	\$	7.35
97190081				7350	EACH	\$	-	FED SUPER FUND TAX PER GAL EXTRA			
97190081									6486	\$	-
97190081				7350	EACH	\$	0.17	MO STATE TAX PER GAL			
97190081									6486	\$	1,249.50
97190081				7350	EACH	\$	0.00	MO ADG INSP FEE TAX PER GAL			
97190081									6486	\$	5.15
97190081				7350	EACH	\$	0.00	MO USTD TRANSP LOAD FEE TAX PER GAL			
97190081									6486	\$	18.38
97190086	11/20/18	642477	ENERGY PETROLEUM COMPANY	500							
								PREMIUM ULTRA LOW SULFUR, #2 DIESEL FOR			
97190086								SCHOOL BUSES, BID #19P-55			
97190086				7500	EACH	\$	2.31				
97190086									6486	\$	17,325.00
97190086				7500	EACH	\$	0.00	FED OIL SPILL FEE			
97190086									6486	\$	16.05
97190086				7500	EACH	\$	0.00	MO AGI TAX PER GAL EXTRA			
97190086									6486	\$	7.50
97190086				7500	EACH	\$	0.17	MO STATE TAX PER GAL			
97190086									6486	\$	1,275.00
97190086				7500	EACH	\$	0.00	MO ADG INSP. FEE TAX PER GAL			
97190086									6486	\$	5.25
97190086				7500	EACH	\$	0.00	MO USTD TRANSP LOAD FEE TAX PER GAL			
97190086									6486	\$	18.75
97190091	11/26/18	642477	ENERGY PETROLEUM COMPANY	500							
								7500 GALLONS OF FUEL FOR SCHOOL BUSES. BID			
97190091								#19P-59			
97190091				7500	EACH	\$	2.17				
97190091									6486	\$	16,261.50
97190091				7500	EACH	\$	0.00	FED. OIL SPILL FEE			
97190091									6486	\$	16.05
97190091				7500	EACH	\$	0.00	MO. AGI TAX PER GALLON EXTRA			
97190091									6486	\$	7.50
97190091				7500	EACH	\$	-	FED SUPER FUND TAX PER GALLON EXTRA			
97190091									6486	\$	-
97190091				7500	EACH	\$	0.17	MO. STATE TAX PER GALLON			
97190091									6486	\$	1,275.00
97190091				7500	EACH	\$	0.00	MO. ADG INSP. FEE TAX PER GALLON			
97190091									6486	\$	5.25
97190091				7500	EACH	\$	0.00	MO. USTD TRANSP. LOAD FEE TAX PER GALLON			
97190091									6486	\$	18.75

97190098	12/10/18	642477	ENERGY PETROLEUM COMPANY	500							
97190098					7500	EACH	\$	1.87	DIESEL FUEL FOR SCHOOL BUSES BID #19P-66		
97190098										6486	\$ 14,025.00
97190098					7500	EACH	\$	0.00	FED OIL SPILL FEE		
97190098										6486	\$ 16.05
97190098					7500	EACH	\$	0.00	MO AGI TAX PER GAL EXTRA		
97190098										6486	\$ 7.50
97190098					7500	EACH	\$	0.17	MO STATE TAX PER GAL		
97190098										6486	\$ 1,275.00
97190098					7500	EACH	\$	0.00	MO ADG INSP FEE TAX PER GAL		
97190098										6486	\$ 5.25
97190098					7500	EACH	\$	0.00	MO USTD TRANSP. LOAD FEE TAX PER GAL		
97190098										6486	\$ 18.75
97190100	12/14/18	800559	KIESEL COMPANY	500							
97190100					7300	EACH	\$	1.74	PREMIUM, ULTRA LOW SULFUR, #2 DIESEL FUEL FOR SCHOOL BUSES.		
97190100										6486	\$ 12,698.35
97190100					7300	EACH	\$	0.00	FED OIL SPILL FEE		
97190100										6486	\$ 15.62
97190100					7300	EACH	\$	0.00	MO AGI TAX PER GAL EXTRA		
97190100										6486	\$ 7.30
97190100					7300	EACH	\$	0.17	MO STATE TAX PER GALLON		
97190100										6486	\$ 1,241.00
97190100					7300	EACH	\$	0.00	MO ADG INSP FEE TAX PER GALLON		
97190100										6486	\$ 5.11
97190100					7300	EACH	\$	0.00	MO USTD TRANSP LOAD FEE TAX PER GALLON		
97190100										6486	\$ 18.25
97190104	01/16/19	642477	ENERGY PETROLEUM COMPANY	500							
97190104					7500	EACH	\$	1.50	PREMIUM, ULTRA LOW SULFUR #2 DIESEL		
97190104										6486	\$ 11,212.50
97190104					7500	EACH	\$	0.00	FED OIL SPILL FEE		
97190104										6486	\$ 16.05
97190104					7500	EACH	\$	0.00	MO AGI TAX PER GAL EXTRA		
97190104										6486	\$ 7.50
97190104					7500	EACH	\$	0.17	MO STATE TAX PER GAL		
97190104										6486	\$ 1,275.00
97190104					7500	EACH	\$	0.00	MO ADG INSP FEE TAX PER GAL		
97190104										6486	\$ 5.25
97190104					7500	EACH	\$	0.00	MO USTD TRANSP LOAD FEE TAX PER GAL		
97190104										6486	\$ 18.75
97190122	02/01/2019	626035	HOME SERVICE OIL CO INC	500							
97190122					7600	EACH	\$	1.68	PREMIUM ULTRA LOW SULFUR #2 DIESEL		
97190122										6486	\$ 12,745.20
97190122					7600	EACH	\$	0.00	FED. OIL SPILL FEE		

97190122								6486	\$	16.26
97190122				7600	EACH	\$	0.00 MO.AGI TAX PER GAL. EXTRA			
97190122				7600	EACH	\$	0.17 MO.STATE TAX PER GAL.	6486	\$	7.60
97190122				7600	EACH	\$	0.00 MO.ADG INSP. FEE TAX PER GAL.	6486	\$	1,292.00
97190122				7600	EACH	\$	0.00 MO.USTD TRANSP. LOAD FEE TAX PER GAL.	6486	\$	5.32
97190122				7600	EACH	\$	0.00 MO.USTD TRANSP. LOAD FEE TAX PER GAL.	6486	\$	19.00
97190124	02/08/2019	626035	HOME SERVICE OIL CO INC	500						
							PREMIUM ULTRA LOW SULFUR #2 DIESEL FUEL			
97190124				7600	EACH	\$	1.83 TREATED			
97190124				7600	EACH	\$	0.00 FED. OIL SPILL FEE	6486	\$	13,927.00
97190124				7600	EACH	\$	0.00 MO. AGI TAX PER GAL . EXTRA	6486	\$	16.26
97190124				7600	EACH	\$	0.17 MO. STATE TAX PER GAL.	6486	\$	7.60
97190124				7600	EACH	\$	0.00 MO.ADG INSP. FEE TAX PER GAL.	6486	\$	1,292.00
97190124				7600	EACH	\$	0.00 MO. USTD TANS. LOAD FEE TAX PER GAL.	6486	\$	5.32
97190124				7600	EACH	\$	0.00 MO. USTD TANS. LOAD FEE TAX PER GAL.	6486	\$	19.00
97190125	02/20/2019	626035	HOME SERVICE OIL CO INC	500						
							PREMIUM ULTRA LOW SULFUR #2 DIESEL FUEL			
97190125				7600	EACH	\$	1.96 TREATED			
97190125				7600	EACH	\$	0.00 FED. OIL SPILL FEE	6486	\$	14,896.00
97190125				7600	EACH	\$	0.00 MO.AGI TAX PER GAL EXTRA	6486	\$	16.26
97190125				7600	EACH	\$	0.17 MO.STATE TAX PER GAL	6486	\$	7.60
97190125				7600	EACH	\$	0.00 MO ADG INSP. FEE TAX PER GAL	6486	\$	1,292.00
97190125				7600	EACH	\$	0.00 MO USTD TRANSP. LOAD FEE TAX PER GAL	6486	\$	5.32
97190125				7600	EACH	\$	0.00 MO USTD TRANSP. LOAD FEE TAX PER GAL	6486	\$	19.00
97190129	02/21/2019	642477	ENERGY PETROLEUM COMPANY	500						
							PREMIUM ULTRA LOW SULFUR #2 DIESEL FUEL			
97190129				7500	EACH	\$	1.98 TREATED			
97190129				1	EACH	\$	0.00 FED OIL SPILL FEE	6486	\$	14,812.50
97190129				1	EACH	\$	0.00 MO. AGI TAX PER GAL. EXTRA	6486	\$	-
97190129				1	EACH	\$	0.17 MO. STATE TAX PER GALLON	6486	\$	-
97190129				1	EACH	\$	0.00 MO. STATE TAX PER GALLON	6486	\$	0.17

97190129					1	EACH	\$	0.00	MO. ADG INSP. FEE TAX PER GAL.			
97190129										6486	\$	-
97190129					1	EACH	\$	0.00	MO. USTD TRANSP. LOAD FEE TAX PER GAL			
97190129										6486	\$	-
97190133	03/05/2019	642477	ENERGY PETROLEUM COMPAN	500								
97190133					7500	EACH		2.15250	PREMIUM, ULTRA LOW SULFUR #2 DIESEL FUEL TRE	6486	\$	16,143.75
97190133					7500	EACH		0.00214	FED. OIL SPILL FEE	6486	\$	16.05
97190133					7500	EACH		0.00100	MO.AGI TAX PER GAL. EXTRA	6486	\$	7.50
97190133					7500	EACH		0.17000	MO.STATE TAX PER GAL	6486	\$	1,275.00
97190133					7500	EACH		0.00070	MO ADG INSP FEE TAX PER GAL	6486	\$	5.25
97190133					7500	EACH		0.00250	MO USTD TRANSP LOAD FE TAX PER GAL	6486	\$	18.75
97190139	03/14/2019	642477	ENERGY PETROLEUM COMPAN	500								
97190139					7500	EACH		2.12000	PREMIUM ULTRA LOW SULFUR #2 DIESEL FUEL TREA	6486	\$	15,900.00
97190139					7500	EACH		0.00214	FED OIL SPILL FEE	6486	\$	16.05
97190139					7500	EACH		0.00100	MO AGI TAX PER GAL EXTRA	6486	\$	7.50
97190139					7500	EACH		0.17000	MO STATE TAX PER GAL	6486	\$	1,275.00
97190139					7500	EACH		0.00070	MO ADG INSP. FEE TAX PER GAL	6486	\$	5.25
97190139					7500	EACH		0.00250	MO USTD TRANSP LOAD FEE TAX PER GAL	6486	\$	18.75
97190142	03/27/2019	642477	ENERGY PETROLEUM COMPAN	500								
97190142					7500	EACH		2.09000	PREMIUM, ULTRA LOW SULFUR, #2 DIESEL FUEL TRE	6486	\$	15,675.00
97190142					7500	EACH		0.00214	FED OIL SPILL FEE	6486	\$	16.05
97190142					7500	EACH		0.00100	MO AGI TAX PER GAL EXTRA	6486	\$	7.50
97190142					7500	EACH		0.17000	MO STATE TAX PER GAL	6486	\$	1,275.00
97190142					7500	EACH		0.00070	MO ADG INSP FEE TAX PER GAL	6486	\$	5.25
97190142					7500	EACH		0.00250	MO USTD TRANSP LOAD FEE TAX PER GAL	6486	\$	18.75
97190152	04/09/2019	642477	ENERGY PETROLEUM COMPAN	500								
97190152					7500	EACH		2.06000	PREMIUM ULTRA LOW SULFUR #2 DIESEL FUEL	6486	\$	15,450.00
97190152					7500	EACH		0.00214	FED OIL SPILL FEE	6486	\$	16.05
97190152					7500	EACH		0.17000	MO STATE TAX PER GAL	6486	\$	1,275.00
97190152					7500	EACH		0.00070	MO ADG INSP FEE TAX PER GAL	6486	\$	5.25
97190152					7500	EACH		0.00250	MO USTD TRANSP LOAD FEE TAX PER GAL	6486	\$	18.75
97190162	04/17/2019	626035	HOME SERVICE OIL CO INC	500								
97190162					7500	EACH		2.11000	PREMIUM ULTRA LOW SULFUR DIESEL FUEL			



97190162						6486	\$	15,825.00
97190162			7500	EACH	0.00214 FED OIL SPILL FEE			
97190162						6486	\$	16.05
97190162			7500	EACH	0.00100 MO AGI TAX PER GAL EXTRA			
97190162						6486	\$	7.50
97190162			7500	EACH	0.17000 MO STATE TAX PER GAL			
97190162						6486	\$	1,275.00
97190162			7500	EACH	0.00070 MO ADG INSP FEE TAX PER GAL			
97190162						6486	\$	5.25
97190162			7500	EACH	0.00250 MO USTD TRANSP LOAD FEE TAX PER GAL			
97190162						6486	\$	18.75
97190166	05/03/2019	642477			ENERGY PETROLEUM COMPAN 500			
97190166			7500	EACH	2.14000 PREMIUM ULTRA LOW SULFUR #2 DIESEL FUEL			
97190166						6486		16,050.00
97190166			7500	EACH	0.00214 FED OIL SPILL FEE			
97190166						6486		16.05
97190166			7500	EACH	0.00100 MO AGI TAX PER GAL EXTRA			
97190166						6486		7.50
97190166			7500	EACH	0.17000 MO STATE TAX PER GAL			
97190166						6486		1,275.00
97190166			7500	EACH	0.00070 MO ADG INSP FEE TAX PER GAL			
97190166						6486		5.25
97190166			7500	EACH	0.00250 MO USTD TRANSP. LOAD FEE TAX PER GAL			
97190166						6486		18.75
97190167	05/09/2019	642477			ENERGY PETROLEUM COMPAN 500			
97190167			7500	EACH	2.15000 PREMIUM ULTRA LOW SULFUR #2 DIESEL FUEL	BID #		
97190167						6486		16,125.00
97190167			7500	EACH	0.00214 FED OIL SPILL FEE			
97190167						6486		16.05
97190167			7500	EACH	0.00100 MO AGI TAX PER GAL EXTRA			
97190167						6486		7.50
97190167			7500	EACH	0.17000 MO STATE TAX PER GAL			
97190167						6486		1,275.00
97190167			7500	EACH	0.00070 MO ADG INSP FEE TAX PER GAL			
97190167						6486		5.25
97190167			7500	EACH	0.00250 MO USTD TRANSP. LOAD FEE TAX PER GAL			
97190167						6486		18.75
97190173	05/20/2019	800559			KIESEL COMPANY	500		
97190173			7500	EACH	2.11500 PREMIUM ULTRA LOW SULFUR #2 DIESEL FUEL	BID #		
97190173						6486		15,862.50
97190173			7500	EACH	0.00214 FED OIL SPILL FEE			
97190173						6486		16.05
97190173			7500	EACH	0.00100 MO AGI TAX PER GAL EXTRA			
97190173						6486		7.50
97190173			7500	EACH	0.17000 MO STATE TAX PER GAL			
97190173						6486		1,275.00
97190173			7500	EACH	0.00070 MO ADG INSP FEE TAX PER GAL			
97190173						6486		5.25

97190173					7500 EACH				0.00250 MO USTD TRANSP LOAD FEE TAX PER GAL				
97190173										6486			18.75
97190174	05/29/2019	800559	KIESEL COMPANY	500									
97190174					7500 EACH				2.16000 PREMIUM ULTRA LOW SULFUR #2 DIESEL FUEL				
97190174										6486			16,200.00
97190174					7500 EACH				0.00214 FED OIL SPILL FEE				
97190174										6486			16.05
97190174					7500 EACH				0.00100 MO AGI TAX PER GAL EXTRA				
97190174										6486			7.50
97190174					7500 EACH				0.17000 MO STATE TAX PER GAL				
97190174										6486			1,275.00
97190174					7500 EACH				0.00070 MO ADG INSP FEE TAX PER GAL				
97190174										6486			5.25
97190174					7500 EACH				0.00250 MO USTD TRANSP. LOAD FEE TAX PER GAL				
97190174										6486			18.75
85190167	08/09/18	851946	NEW SYSTEM CARPET	401									
									TRASH CAN LINERS 40" X 48" - 16 MICRON HIGH DENSITY ONLY - CLEAR - START SEALED (250/CS) APPROX CASE WGT 21.6#				
85190167					400 EACH	\$		17.50	INTERPLAST/PITT #MR20283 MC	6411	\$		7,000.00
85190168	08/09/18	914674	UNIPAK CORP.	401									
									TRASH CAN LINERS 24" X 23" - 0.4 MIL LINEAR LOW DENSITY ONLY - CLEAR - STAR SEALED 1000/CS - APPROX CASE WGT 14.72#				
85190168					100 EACH	\$		15.40	UPS #24R	6411	\$		1,540.00
85190176	08/17/18	800066	INDUSTRIAL SOAP CO	401									
									TRASH CAN LINERS 40" x 48" - 16 MICRON HIGH DENSITY ONLY - CLEAR - STAR SEALED (250/CS)				
85190176					400 EACH	\$		17.75	APPROX CASE WGT 21.6# PITT #MR40483MC	6411	\$		7,100.00
85190232	09/25/18	914674	UNIPAK CORP.	401									
									TRASH CAN LINERS 33" X 39" - 1.3 MIL - LINEAR LOW DENSITY ONLY CLEAR - STAR SEALED - 100/CASE				
85190232					800 EACH	\$		9.59	APPROX CASE WT: 11# PER CASE	6411	\$		7,672.00
85190258	10/31/18	914674	UNIPAK CORP.	401									
									TRASH LINERS 40" X 48" - 16 MICRON HIGH DENSITY ONLY CLEAR - STAR SEALED - (100/CASE) APPROX 20# / CASE				
85190258					1000 EACH	\$		7.18	UPC #40483	6411	\$		7,180.00
85190320	02/06/2019	800066	INDUSTRIAL SOAP CO	401									
									TRASH CAN LINERS 40" X 48" - 16 MICRON HIGH DENSITY ONLY - CLEAR STAR SEALED 250 BAGS/ CASE APPROX WGT 20# PER CASE				
85190320					400 EACH	\$		18.00	#MR40483MC	6411	\$		7,200.00

85190395	04/11/2019	914674	UNIPAK CORP.	401							
85190395					300	EACH	17.90000	TRASH CAN LINERS 40" X 48" - 16 MICRON HIGH DEN			
85190395									6411	\$	5,370.00
85190395					800	EACH	9.88000	TRASH CAN LINERS 33" X 39" - 1.3 MIL LINEAR LOW I			
85190395									6411	\$	7,904.00
85190395					100	EACH	15.25000	TRASH CAN LINERS 24" X 23" - 0.4 MIL NINESR LOW D			
85190395									6411	\$	1,525.00
81190034	08/08/18	840018	LIBERTY FRUIT COMPANY, INC.	700							
81190034					1	EACH	\$ 20,000.00	BLANKET PO	6471	\$	20,000.00
81190044	11/19/18	913529	VACCARO & SONS PRODUCE	700							
81190044					1	EACH	\$ 29,295.00	BLANKET PO	6471	\$	29,295.00
81190047	02/05/2019	913529	VACCARO & SONS PRODUCE	700							
81190047					1	EACH	\$ 40,000.00	BLANKET PO	6471	\$	40,000.00
									<b>Total Commodity 202 (Paper)</b>	\$	187,577.20
									<b>Total Commodity 400 (Fuel - Facilities)</b>	\$	99,545.73
									<b>Total Commodity 500 (Fuel - Transportation)</b>	\$	407,770.72
									<b>Total Commodity 401 (Trash Liners)</b>	\$	52,491.00
									<b>Total Commodity 700 (Produce)</b>	\$	<u>89,295.00</u>
									<b>Grand Total All Commodity</b>	\$	836,679.65